



TOURIST ACCOMMODATION AUSTRALIA

EMBARGO: 11.30AM (CANBERRA TIME) FRI 29 SEP 2006

C O N T E N T S

	<i>page</i>
Notes	2
Summary of findings	3
List of tables	8

ADDITIONAL INFORMATION

Explanatory notes	55
Glossary	60

I N Q U I R I E S

For further information about these and related statistics, contact the National Information and Referral Service on 1300 135 070.

NOTES

FORTHCOMING ISSUES

<i>ISSUE (Quarter)</i>	<i>RELEASE DATE</i>
September 2006	9 January 2007
December 2006	30 March 2007

CYCLONE LARRY

Cyclone Larry occurred on 20 March 2006 in the Tropical North Queensland Tourism region. During the June quarter some establishments were temporarily closed as a result of the cyclone and reopened during the quarter. These closures had minimal impact on demand.

ABOUT THIS PUBLICATION

This publication presents results from the June quarter 2006 Survey of Tourist Accommodation (STA) for the following categories of establishments:

- licensed hotels and resorts with facilities and 5 or more rooms
- motels, private hotels and guest houses with facilities and 5 or more rooms
- serviced apartments with 5 or more units
- caravan parks with 40 or more powered sites
- holiday flats, units and houses of letting entities with 15 or more rooms or units
- visitor hostels with 25 or more bed spaces.

ABBREVIATIONS

'000	thousand
\$/000	thousand dollars
AAA	Australian Automobile Association
ABS	Australian Bureau of Statistics
ACT	Australian Capital Territory
ASGC	Australian Standard Geographical Classification
cat. no.	Catalogue number
GST	goods and services tax
no.	number
NSW	New South Wales
NT	Northern Territory
qtr	quarter
Qld	Queensland
SA	South Australia
SLA	statistical local area
STA	Survey of Tourist Accommodation
Tas.	Tasmania
Vic.	Victoria
WA	Western Australia

Dennis Trewin
Australian Statistician

SUMMARY OF FINDINGS

SEASONALLY ADJUSTED AND TREND

*Hotels, motels and
serviced apartments with
15 or more rooms*

KEY FIGURES, Seasonally adjusted and trend—Australia

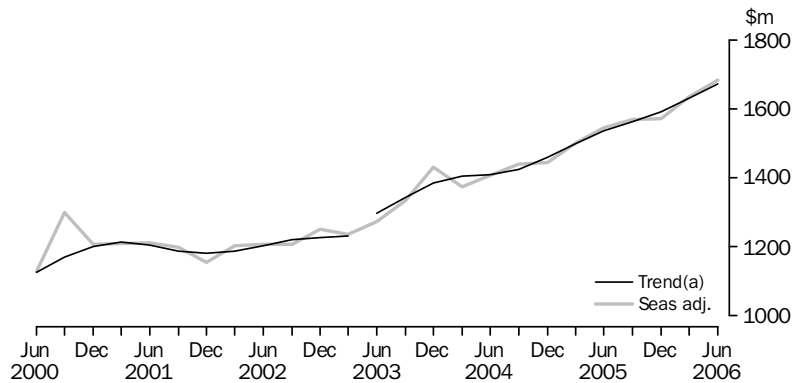
	Jun Qtr 2005	Mar Qtr 2006	Jun Qtr 2006
Seasonally Adjusted			
Room occupancy rate (%)	63.4	64.3	64.7
Takings from accommodation ('000)	1 543 475	1 635 113	1 682 645
Trend			
Room occupancy rate (%)	63.1	63.9	64.7
Takings from accommodation ('000)	1 535 304	1 629 824	1 672 315

ACCOMMODATION TAKINGS

The trend estimate of the total accommodation takings for hotels, motels and serviced apartments with 15 or more rooms continued to increase. In June quarter 2006, it increased by 2.6% to \$1,672.3 million compared with March quarter 2006.

The seasonally adjusted estimate of the total accommodation takings rose by 2.9% to \$1,682.6 million from March quarter 2006 to June quarter 2006.

ACCOMMODATION TAKINGS, Seasonally adjusted and trend—Australia



(a) Break in time series between the March and June quarters 2003. See Explanatory Notes.

ROOM OCCUPANCY RATE

The trend estimate of the room occupancy rate for hotels, motels and serviced apartments with 15 or more rooms for the June quarter 2006 (64.7%) increased by 0.8 percentage points over the March quarter 2006.

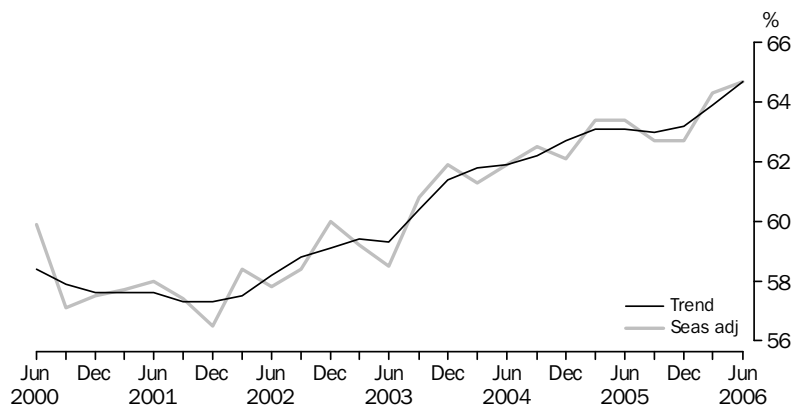
SUMMARY OF FINDINGS *continued*

Hotels, motels and serviced apartments with 15 or more rooms continued

ROOM OCCUPANCY RATE *continued*

The seasonally adjusted estimate of the room occupancy rate increased by 0.4 percentage points to 64.7% from March quarter 2006 to June quarter 2006.

ROOM OCCUPANCY RATE (a), Seasonally adjusted and trend—Australia



(a) Room occupancy rates are not subject to a break in series.

Seasonally adjusted and trend data are not yet available for hotels, motels and serviced apartments with 5 to 14 rooms or 5 or more rooms.

ORIGINAL

Hotels, motels and serviced apartments

The original estimates are impacted by seasonal variations and irregular or non-seasonal influences. Comparisons between quarters should be made with caution.

KEY FIGURES, Original—Australia

	March Qtr 2006	June Qtr 2006
Hotels, motels and serviced apartments with 5 to 14 rooms		
Rooms (no.)	18 971	18 701
Room nights occupied ('000)	798.3	739.7
Room occupancy rate (%)	47.3	43.9
Takings from accommodation (\$'000)	72 685	64 684
Average takings per room night occupied (\$)	91.0	87.5
Hotels, motels and serviced apartments with 15 or more rooms		
Rooms (no.)	212 598	213 035
Room nights occupied ('000)	12 225.5	11 748.7
Room occupancy rate (%)	64.2	60.9
Takings from accommodation (\$'000)	1 649 208	1 526 511
Average takings per room night occupied (\$)	134.9	129.9
Hotels, motels and serviced apartments with 5 or more rooms		
Rooms (no.)	231 569	231 736
Room nights occupied ('000)	13 023.8	12 488.3
Room occupancy rate (%)	62.8	59.5
Takings from accommodation (\$'000)	1 721 893	1 591 196
Average takings per room night occupied (\$)	132.2	127.4

SUMMARY OF FINDINGS *continued*

Hotels, motels and serviced apartments continued

ACCOMMODATION TAKINGS

In June quarter 2006, accommodation takings for hotels, motels and serviced apartments with 5 or more rooms were \$1,591.2 million. The average takings per room night occupied for these establishments were \$127.41.

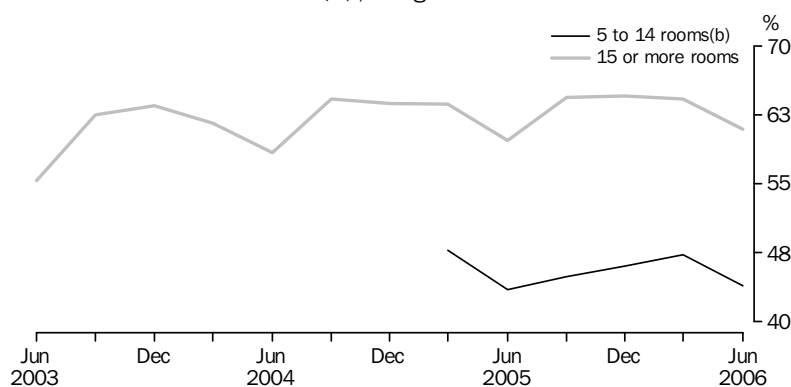
Accommodation takings for hotels, motels and serviced apartments with 15 or more rooms for June quarter were \$1,526.5 million, at an average of \$129.93 per room night occupied. For establishments with 5 to 14 rooms, accommodation takings were \$64.7 million, at an average of \$87.45 per room night occupied.

The contributions to accommodation takings in June quarter 2006 for hotels, motels and serviced apartments with 5 or more rooms were highest in New South Wales (\$510.5 million) and Queensland (\$427.7 million).

ROOM OCCUPANCY RATE

The room occupancy rate for hotels, motels and serviced apartments with 5 or more rooms was 59.5% in June quarter 2006.

ROOM OCCUPANCY RATE (a), Original—Australia



(a) Room occupancy rates are not subject to a break in series.

(b) These establishments were included in the survey from March quarter 2005 onwards.

For hotels, motels and serviced apartments with 15 or more rooms, the room occupancy rate was 60.9%, while for 5 to 14 room hotels, motels and serviced apartments, the room occupancy rate was 43.9%.

ROOM NIGHTS OCCUPIED

Total room nights occupied were 12.5 million in June quarter 2006 for hotels, motels and serviced apartments with 5 or more rooms. Room nights occupied were highest in New South Wales (3.8 million) and Queensland (3.5 million).

For hotels, motels and serviced apartments with 15 or more rooms, room nights occupied were 11.7 million in June quarter 2006, while for establishments with 5 to 14 rooms, room nights occupied were 0.7 million.

SUMMARY OF FINDINGS *continued*

Hotels, motels and serviced apartments continued

AVERAGE LENGTH OF STAY

The average length of stay in June quarter 2006 for hotels, motels and serviced apartments with 15 or more rooms was 2.2 days. For establishments with 5 to 14 rooms, the average length of stay for June quarter was 1.8 days.

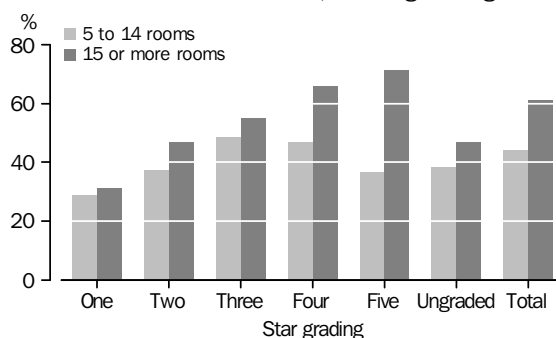
Queensland (2.6 days) reported the longest average length of stay for hotels, motels and serviced apartments with 15 or more rooms, followed by Western Australia (2.4 days). The shortest average length of stay was in New South Wales, South Australia and Tasmania (2.0 days).

STAR GRADING

In June quarter 2006, the room occupancy rate for five-star hotels, motels and serviced apartments with 5 or more rooms was 70.9% compared with 30.3% for one-star. For hotels, motels and serviced apartments with 15 or more rooms, the room occupancy rate was 71.1% for five-star establishments compared with 31.1% for one-star.

For establishments with 5 to 14 rooms, three-star (48.3%) and four-star (46.5%) establishments had the highest room occupancy rates, compared with one-star establishments at 28.8%.

ROOM OCCUPANCY RATE, Star grading—June Qtr 2006



SUMMARY OF FINDINGS *continued*

Caravan parks, holiday flats, units and houses, and visitor hostels

KEY FIGURES, Australia

	Mar Qtr 2006	Jun Qtr 2006
Caravan parks		
Capacity (no.)	237 490	236 872
Site nights occupied ('000)	11 120	10 766
Site occupancy rate (%)	52.1	50.2
Takings from accommodation (\$'000)	226 027	203 323
Holiday flats, units and houses		
Capacity (no.)	28 714	28 281
Unit nights occupied ('000)	1 351	1 041
Unit occupancy rate (%)	52.4	40.5
Takings from accommodation (\$'000)	156 184	108 196
Visitor hostels		
Capacity (no.)	48 042	47 732
Guest nights occupied ('000)	2 325	1 928
Bed occupancy rate (%)	54.1	44.6
Takings from accommodation (\$'000)	53 337	45 136

ACCOMMODATION TAKINGS

In June quarter 2006, accommodation takings for caravan parks were \$203.3 million. New South Wales (\$66.7 million) had the highest accommodation takings for all caravan parks for June quarter 2006.

Short-term caravan park accommodation takings were \$168.3 million in June quarter 2006, while takings for long-term caravan parks were \$35.0 million in that quarter.

Accommodation takings for holiday flats, units and houses were \$108.2 million in June quarter 2006. For visitor hostels, accommodation takings were \$45.1 million.

OCCUPANCY RATE

The site occupancy rate for all caravan parks in June quarter 2006 was 50.2%. Short-term caravan park site occupancy rates were 46.8%, while the rate for long-term caravan parks was 73.6% in June quarter 2006.

For holiday flats, units and houses, the unit occupancy rate was 40.5% in June quarter 2006.

The bed occupancy rate for visitor hostels in June quarter 2006 was 44.6%. Queensland (53.9%), Western Australia (49.4%) and New South Wales (46.6%) had the highest bed occupancy rates for visitor hostels in June quarter 2006.

LIST OF TABLES

page

AUSTRALIA

ORIGINAL, SEASONALLY ADJUSTED AND TREND

- 1** Hotels, motels and serviced apartments with 15 or more rooms 9

SUMMARY

- 2** Hotels, motels and serviced apartments 10
3 Licensed hotels and resorts 12
4 Motels, private hotels and guest houses 14
5 Serviced apartments 16
6 Caravan parks 18
7 Holiday flats, units and houses 20
8 Visitor hostels 22

STAR GRADING

- 9** Hotels, motels and serviced apartments with 5-14 rooms 23
10 Hotels, motels and serviced apartments with 15 or more rooms 25
11 Hotels, motels and serviced apartments with 5 or more rooms 27

STATES AND TERRITORIES

- 12** Hotels, motels and serviced apartments with 5-14 rooms 29
13 Hotels, motels and serviced apartments with 15 or more rooms 32
14 Hotels, motels and serviced apartments with 5 or more rooms 35
15 Caravan parks, short-term 38
16 Caravan parks, long-term 41
17 Caravan parks, total 44
18 Holiday flats, units and houses, real estate agents 47
19 Holiday flats, units and houses, other letting entities 49
20 Holiday flats, units and houses, total 51
21 Visitor hostels 53

Period	ORIGINAL		SEASONALLY ADJUSTED		TREND	
	Room occupancy rate	Takings from accommodation(a)	Room occupancy rate	Takings from accommodation(a)	Room occupancy rate	Takings from accommodation(a)
	%	'000	%	'000	%	'000
2002						
December Quarter	61.7	1 314 053	60.0	1 250 751	59.1	1 225 970
2003						
March Quarter	59.1	1 244 695	59.2	1 235 302	59.4	1 231 939
June Quarter	55.3	1 159 500	58.5	1 273 918	59.3	1 296 615
September Quarter	62.5	1 373 488	60.8	1 334 681	60.4	1 342 845
December Quarter	63.5	1 499 344	61.9	1 430 808	61.4	1 384 337
2004						
March Quarter	61.6	1 398 573	61.3	1 374 673	61.8	1 403 862
June Quarter	58.4	1 277 463	61.9	1 406 946	61.9	1 408 989
September Quarter	64.2	1 485 716	62.5	1 438 360	62.2	1 425 091
December Quarter	63.7	1 513 029	62.1	1 444 258	62.7	1 459 647
2005						
March Quarter	63.6	1 525 330	63.4	1 501 305	63.1	1 498 709
June Quarter	59.7	1 395 043	63.4	1 543 475	63.1	1 535 304
September Quarter	64.4	1 618 246	62.7	1 569 518	63.0	1 562 788
December Quarter	64.5	1 650 876	62.7	1 570 743	63.2	1 590 923
2006						
March Quarter	64.2	1 649 208	64.3	1 635 113	63.9	1 629 824
June Quarter	60.9	1 526 511	64.7	1 682 645	64.7	1 672 315

(a) Break in time series between the March and June quarters 2003. See Explanatory Notes.

SUMMARY OF HOTELS, MOTELS AND SERVICED APARTMENTS, Australia

<i>Period</i>	<i>Establishments</i> no.	<i>Rooms</i> no.	<i>Bed spaces</i> no.	<i>Persons employed</i> no.	<i>Room nights occupied</i> '000	<i>Room occupancy rate</i> %
.....						
HOTELS MOTELS AND SERVICED APARTMENTS WITH 5 TO 14 ROOMS						
2005						
June Quarter	2 115	20 001	58 461	12 680	787.3	43.5
September Quarter	2 061	19 583	57 173	12 454	806.3	44.9
December Quarter	2 018	19 293	56 539	12 705	807.5	46.0
2006						
March Quarter	1 983	18 971	56 164	12 279	798.3	47.3
June Quarter	1 954	18 701	55 350	11 789	739.7	43.9
Year ended June 2006	3 151.8	45.5
.....						
HOTELS MOTELS AND SERVICED APARTMENTS WITH 15 OR MORE ROOMS						
2005						
March Quarter	4 137	209 022	596 242	113 164	11 841.3	63.6
June Quarter	4 151	209 823	596 395	112 991	11 342.3	59.7
September Quarter	4 172	211 646	601 697	114 947	12 535.4	64.4
December Quarter	4 169	212 784	603 192	114 808	12 543.5	64.5
2006						
March Quarter	4 187	212 598	607 385	114 042	12 225.5	64.2
June Quarter	4 194	213 035	609 540	114 647	11 748.7	60.9
Year ended June 2005	47 265.8	62.8
Year ended June 2006	49 053.0	63.5
.....						
HOTELS MOTELS AND SERVICED APARTMENTS WITH 5 OR MORE ROOMS						
2005						
June Quarter	6 266	229 824	654 856	125 671	12 129.6	58.3
September Quarter	6 233	231 229	658 870	127 401	13 341.7	62.8
December Quarter	6 187	232 077	659 731	127 513	13 351.0	63.0
2006						
March Quarter	6 170	231 569	663 549	126 321	13 023.8	62.8
June Quarter	6 148	231 736	664 890	126 436	12 488.3	59.5
Year ended June 2006	52 204.9	62.0
.....						
..	not applicable					

Period	Guest nights occupied	Bed occupancy rate	Guest arrivals	Average length of stay	Takings from accommodation
	'000	%	'000	days	\$'000
.....					
HOTELS MOTELS AND SERVICED APARTMENTS WITH 5 TO 14 ROOMS					
2005					
June Quarter	1 438.4	27.2	824.2	1.7	65 607
September Quarter	1 502.3	28.6	841.3	1.8	69 336
December Quarter	1 520.0	29.6	843.8	1.8	71 657
2006					
March Quarter	1 511.2	30.3	822.6	1.8	72 685
June Quarter	1 345.0	27.0	752.9	1.8	64 684
Year ended June 2006	5 878.4	28.9	3 260.6	1.8	278 362
.....					
HOTELS MOTELS AND SERVICED APARTMENTS WITH 15 OR MORE ROOMS					
2005					
March Quarter	21 829.9	41.1	9 341.2	2.3	1 525 330
June Quarter	19 630.0	36.4	8 947.5	2.2	1 395 043
September Quarter	22 495.5	40.7	9 853.1	2.3	1 618 246
December Quarter	22 545.3	41.0	9 771.8	2.3	1 650 876
2006					
March Quarter	21 994.2	40.5	9 465.5	2.3	1 649 208
June Quarter	20 326.3	36.9	9 159.3	2.2	1 526 511
Year ended June 2005	85 301.3	39.8	37 580.6	2.3	5 919 119
Year ended June 2006	87 361.3	39.7	38 249.6	2.3	6 444 842
.....					
HOTELS MOTELS AND SERVICED APARTMENTS WITH 5 OR MORE ROOMS					
2005					
June Quarter	21 068.4	35.6	9 771.8	2.2	1 460 650
September Quarter	23 997.7	39.6	10 694.4	2.2	1 687 582
December Quarter	24 065.3	40.0	10 615.6	2.3	1 722 533
2006					
March Quarter	23 505.4	39.6	10 288.1	2.3	1 721 893
June Quarter	21 671.3	36.1	9 912.1	2.2	1 591 196
Year ended June 2006	93 239.7	38.8	41 510.2	2.2	6 723 204

SUMMARY OF LICENSED HOTELS AND RESORTS, Australia

<i>Period</i>	<i>Establishments</i>	<i>Rooms</i>	<i>Bed spaces</i>	<i>Persons employed</i>	<i>Room nights occupied</i>	<i>Room occupancy rate</i>
	no.	no.	no.	no.	'000	%
.....						
LICENSED HOTELS WITH 5 TO 14 ROOMS						
2005						
June Quarter	491	4 573	12 100	7 525	139.9	33.8
September Quarter	478	4 478	11 864	7 431	148.9	36.2
December Quarter	478	4 487	11 969	7 706	155.0	37.7
2006						
March Quarter	467	4 406	11 903	7 493	155.1	39.2
June Quarter	451	4 255	11 470	7 055	141.2	36.5
Year ended June 2006	600.2	37.4
.....						
LICENSED HOTELS WITH 15 OR MORE ROOMS						
2005						
March Quarter	816	79 114	206 172	69 759	4 908.5	69.7
June Quarter	820	79 353	205 730	69 485	4 629.7	64.5
September Quarter	820	80 073	206 787	70 484	5 109.4	69.4
December Quarter	812	80 134	206 756	70 560	5 167.3	70.5
2006						
March Quarter	816	79 706	206 960	69 705	4 972.5	69.6
June Quarter	822	79 808	207 451	69 903	4 751.4	65.7
Year ended June 2005	19 595.1	68.4
Year ended June 2006	20 000.7	68.8
.....						
LICENSED HOTELS WITH 5 OR MORE ROOMS						
2005						
June Quarter	1 311	83 926	217 830	77 010	4 769.6	62.8
September Quarter	1 298	84 551	218 651	77 915	5 258.3	67.6
December Quarter	1 290	84 621	218 725	78 266	5 322.3	68.8
2006						
March Quarter	1 283	84 112	218 863	77 198	5 127.7	68.0
June Quarter	1 273	84 063	218 921	76 958	4 892.6	64.3
Year ended June 2006	20 600.8	67.2
.....						
..	not applicable					

SUMMARY OF LICENSED HOTELS AND RESORTS, Australia *continued*

<i>Period</i>	<i>Guest nights occupied</i> '000	<i>Bed occupancy rate</i> %	<i>Guest arrivals</i> '000	<i>Average length of stay</i> days	<i>Takings from accommodation</i> \$'000
---------------	--	--	-----------------------------------	---	---

LICENSED HOTELS WITH 5 TO 14 ROOMS

2005					
June Quarter	213.9	19.5	131.4	1.6	8 864
September Quarter	228.3	20.9	136.7	1.7	9 561
December Quarter	239.2	21.8	144.1	1.7	10 187
2006					
March Quarter	240.5	22.5	138.4	1.7	10 412
June Quarter	216.5	20.8	124.0	1.7	9 276
Year ended June 2006	924.5	21.5	543.3	1.7	39 435

LICENSED HOTELS WITH 15 OR MORE ROOMS

2005					
March Quarter	8 157.9	44.5	3 456.8	2.4	749 365
June Quarter	7 272.8	39.1	3 352.1	2.2	674 905
September Quarter	8 320.0	43.8	3 656.3	2.3	777 192
December Quarter	8 417.2	44.6	3 644.0	2.3	809 598
2006					
March Quarter	8 110.2	43.8	3 507.8	2.3	801 350
June Quarter	7 479.6	39.9	3 432.8	2.2	732 327
Year ended June 2005	32 065.6	43.0	14 048.7	2.3	2 895 035
Year ended June 2006	32 326.9	43.0	14 240.8	2.3	3 120 468

LICENSED HOTELS WITH 5 OR MORE ROOMS

2005					
June Quarter	7 486.8	38.1	3 483.4	2.1	683 769
September Quarter	8 548.3	42.5	3 793.1	2.3	786 753
December Quarter	8 656.4	43.4	3 788.1	2.3	819 785
2006					
March Quarter	8 350.6	42.6	3 646.2	2.3	811 762
June Quarter	7 696.1	38.9	3 556.8	2.2	741 603
Year ended June 2006	33 251.4	41.8	14 784.1	2.2	3 159 902

SUMMARY OF MOTELS, PRIVATE HOTELS AND GUEST HOUSES, Australia

<i>Period</i>	<i>Establishments</i>	<i>Rooms</i>	<i>Bed spaces</i>	<i>Persons employed</i>	<i>Room nights occupied</i>	<i>Room occupancy rate</i>
	no.	no.	no.	no.	'000	%

MOTELS AND GUEST HOUSES WITH 5 TO 14 ROOMS

2005						
June Quarter	1 280	12 466	35 227	4 064	512.2	45.5
September Quarter	1 246	12 182	34 332	3 923	510.4	45.7
December Quarter	1 212	11 925	33 785	3 948	504.8	46.8
2006						
March Quarter	1 193	11 744	33 705	3 791	497.6	47.8
June Quarter	1 172	11 571	33 084	3 726	467.1	44.9
Year ended June 2006	1 979.9	46.3

MOTELS AND GUEST HOUSES WITH 15 OR MORE ROOMS

2005						
March Quarter	2 473	86 060	248 577	29 334	4 240.0	55.4
June Quarter	2 476	86 442	249 619	29 381	4 216.6	54.0
September Quarter	2 485	86 440	250 100	29 875	4 573.9	57.6
December Quarter	2 485	86 798	249 385	29 477	4 490.4	56.7
2006						
March Quarter	2 491	86 584	250 908	29 646	4 392.8	56.8
June Quarter	2 491	86 847	251 385	29 971	4 361.1	55.6
Year ended June 2005	17 184.7	55.4
Year ended June 2006	17 818.1	56.7

MOTELS AND GUEST HOUSES WITH 5 OR MORE ROOMS

2005						
June Quarter	3 756	98 908	284 846	33 445	4 728.9	52.9
September Quarter	3 731	98 622	284 432	33 798	5 084.3	56.1
December Quarter	3 697	98 723	283 170	33 425	4 995.2	55.5
2006						
March Quarter	3 684	98 328	284 613	33 437	4 890.4	55.7
June Quarter	3 663	98 418	284 469	33 697	4 828.2	54.4
Year ended June 2006	19 798.0	55.4

.. not applicable

<i>Period</i>	<i>Guest nights occupied</i> '000	<i>Bed occupancy rate</i> %	<i>Guest arrivals</i> '000	<i>Average length of stay</i> days	<i>Takings from accommodation</i> \$'000
.....					
MOTELS AND GUEST HOUSES WITH 5 TO 14 ROOMS					
2005					
June Quarter	902.7	28.4	565.5	1.6	42 030
September Quarter	915.4	29.1	573.7	1.6	43 424
December Quarter	919.7	30.1	572.2	1.6	44 374
2006					
March Quarter	908.3	30.5	554.0	1.6	44 545
June Quarter	820.0	27.6	508.6	1.6	40 218
Year ended June 2006	3 563.4	29.3	2 208.5	1.6	172 561
.....					
MOTELS AND GUEST HOUSES WITH 15 OR MORE ROOMS					
2005					
March Quarter	7 622.3	34.5	4 181.8	1.8	413 752
June Quarter	7 132.7	31.6	4 040.5	1.8	400 281
September Quarter	8 003.2	34.8	4 455.8	1.8	452 358
December Quarter	7 783.3	34.3	4 337.3	1.8	443 827
2006					
March Quarter	7 656.2	34.2	4 219.3	1.8	445 993
June Quarter	7 418.0	32.7	4 075.0	1.8	434 222
Year ended June 2005	30 219.9	33.7	16 925.7	1.8	1 644 712
Year ended June 2006	30 860.7	34.0	17 087.4	1.8	1 776 401
.....					
MOTELS AND GUEST HOUSES WITH 5 OR MORE ROOMS					
2005					
June Quarter	8 035.4	31.2	4 605.9	1.7	442 312
September Quarter	8 918.6	34.1	5 029.5	1.8	495 783
December Quarter	8 703.0	33.8	4 909.5	1.8	488 201
2006					
March Quarter	8 564.5	33.8	4 773.3	1.8	490 538
June Quarter	8 238.0	32.1	4 583.6	1.8	474 441
Year ended June 2006	34 424.1	33.5	19 295.9	1.8	1 948 962

SUMMARY OF SERVICED APARTMENTS, Australia

<i>Period</i>	<i>Establishments</i> no.	<i>Rooms</i> no.	<i>Bed spaces</i> no.	<i>Persons employed</i> no.	<i>Room nights occupied</i> '000	<i>Room occupancy rate</i> %
SERVICED APARTMENTS WITH 5 TO 14 ROOMS						
2005						
June Quarter	344	2 962	11 134	1 091	135.1	50.1
September Quarter	337	2 923	10 977	1 100	147.1	54.8
December Quarter	328	2 881	10 785	1 051	147.7	56.0
2006						
March Quarter	323	2 821	10 556	995	145.7	57.5
June Quarter	331	2 875	10 796	1 008	131.3	50.6
Year ended June 2006	571.7	54.7

SERVICED APARTMENTS WITH 15 OR MORE ROOMS

2005						
March Quarter	848	43 848	141 493	14 071	2 692.8	68.4
June Quarter	855	44 028	141 046	14 125	2 495.9	62.4
September Quarter	867	45 133	144 810	14 588	2 852.1	68.7
December Quarter	872	45 852	147 051	14 771	2 885.8	68.7
2006						
March Quarter	880	46 308	149 517	14 691	2 860.1	68.7
June Quarter	881	46 380	150 704	14 773	2 636.2	62.5
Year ended June 2005	10 486.0	67.3
Year ended June 2006	11 234.3	67.2

SERVICED APARTMENTS WITH 5 OR MORE ROOMS

2005						
June Quarter	1 199	46 990	152 180	15 216	2 631.1	61.7
September Quarter	1 204	48 056	155 787	15 688	2 999.2	67.9
December Quarter	1 200	48 733	157 836	15 822	3 033.5	68.0
2006						
March Quarter	1 203	49 129	160 073	15 686	3 005.8	68.1
June Quarter	1 212	49 255	161 500	15 781	2 767.5	61.8
Year ended June 2006	11 806.0	66.4

.. not applicable

SUMMARY OF SERVICED APARTMENTS, Australia *continued*

<i>Period</i>	<i>Guest nights occupied</i> '000	<i>Bed occupancy rate</i> %	<i>Guest arrivals</i> '000	<i>Average length of stay</i> days	<i>Takings from accommodation</i> \$'000
.....					
SERVICED APARTMENTS WITH 5 TO 14 ROOMS					
2005					
June Quarter	321.8	31.7	127.4	2.5	14 713
September Quarter	358.5	35.6	130.9	2.7	16 351
December Quarter	361.1	36.6	127.5	2.8	17 096
2006					
March Quarter	362.4	38.2	130.1	2.8	17 728
June Quarter	308.5	31.6	120.2	2.6	15 190
Year ended June 2006	1 390.5	35.5	508.8	2.7	66 366
.....					
SERVICED APARTMENTS WITH 15 OR MORE ROOMS					
2005					
March Quarter	6 049.6	47.7	1 702.6	3.6	362 213
June Quarter	5 224.4	40.8	1 555.0	3.4	319 856
September Quarter	6 172.4	46.3	1 741.0	3.5	388 695
December Quarter	6 344.8	47.1	1 790.4	3.5	397 451
2006					
March Quarter	6 227.8	46.4	1 738.4	3.6	401 865
June Quarter	5 428.8	39.6	1 651.5	3.3	359 962
Year ended June 2005	23 015.7	45.9	6 606.2	3.5	1 379 372
Year ended June 2006	24 173.7	44.8	6 921.4	3.5	1 547 973
.....					
SERVICED APARTMENTS WITH 5 OR MORE ROOMS					
2005					
June Quarter	5 546.2	40.2	1 682.4	3.3	334 569
September Quarter	6 530.9	45.6	1 871.9	3.5	405 046
December Quarter	6 705.9	46.4	1 918.0	3.5	414 548
2006					
March Quarter	6 590.2	45.8	1 868.6	3.5	419 593
June Quarter	5 737.2	39.1	1 771.7	3.2	375 152
Year ended June 2006	25 564.2	44.2	7 430.2	3.4	1 614 339

CAPACITY

Period	CAPACITY					Total capacity
	Establishments	On-site vans	Other powered sites	Unpowered sites	Cabins, flats units and villas	
	no.	no.	no.	no.	no.	no.
CARAVAN PARKS, SHORT TERM (b)						
2005						
June Quarter	1 521	13 563	131 162	39 574	25 160	209 459
September Quarter	1 504	14 055	128 427	38 974	25 005	206 461
December Quarter	1 495	13 930	128 398	39 231	25 191	206 750
2006						
March Quarter	1 483	13 277	128 939	39 714	25 255	207 185
June Quarter	1 475	13 469	127 662	40 035	25 309	206 475
Year ended June 2006
CARAVAN PARKS, LONG TERM (b)						
2005						
June Quarter	247	4 858	18 561	2 036	6 226	31 681
September Quarter	240	4 372	18 224	2 256	6 005	30 857
December Quarter	239	4 173	18 117	2 079	6 209	30 578
2006						
March Quarter	235	4 254	17 764	2 074	6 213	30 305
June Quarter	235	4 287	17 743	2 081	6 286	30 397
Year ended June 2006
CARAVAN PARKS, TOTAL						
2005						
June Quarter	1 768	18 421	149 723	41 610	31 386	241 140
September Quarter	1 744	18 427	146 651	41 230	31 010	237 318
December Quarter	1 734	18 103	146 515	41 310	31 400	237 328
2006						
March Quarter	1 718	17 531	146 703	41 788	31 468	237 490
June Quarter	1 710	17 756	145 405	42 116	31 595	236 872
Year ended June 2006

.. not applicable

(a) Comprising establishments with 40 or more powered sites and cabins, flats, units and villas.

(b) For definitions of short-term and long-term caravan parks, see Glossary.

SUMMARY OF CARAVAN PARKS (a), Australia *continued*

<i>Period</i>	<i>Persons employed</i>	<i>Sites occupied by long-term guests</i>	<i>Other sites permanently reserved</i>	<i>Site nights occupied</i>	<i>Site occupancy rate</i>	<i>Takings from accommodation</i>
<i>no.</i>	<i>no.</i>	<i>no.</i>	<i>'000</i>	<i>%</i>	<i>\$'000</i>	
CARAVAN PARKS, SHORT TERM (b)						
2005						
June Quarter	8 683	19 482	41 283	8 832.6	46.6	154 516
September Quarter	8 493	19 408	41 358	9 208.7	49.1	169 549
December Quarter	8 689	19 038	41 405	8 790.0	46.5	175 370
2006						
March Quarter	8 636	19 156	40 624	9 032.9	48.5	189 208
June Quarter	8 496	18 985	40 240	8 729.2	46.8	168 334
Year ended June 2006	35 760.9	47.7	702 461
CARAVAN PARKS, LONG TERM (b)						
2005						
June Quarter	1 381	18 362	1 649	2 155.9	74.8	34 001
September Quarter	1 300	18 051	1 560	2 130.0	75.0	36 766
December Quarter	1 327	17 687	1 498	2 088.9	74.4	37 799
2006						
March Quarter	1 320	17 594	1 567	2 086.6	76.6	36 819
June Quarter	1 290	17 165	1 511	2 036.6	73.6	34 989
Year ended June 2006	8 342.0	74.9	146 372
CARAVAN PARKS, TOTAL						
2005						
June Quarter	10 064	37 844	42 932	10 988.6	50.4	188 516
September Quarter	9 793	37 459	42 918	11 338.7	52.5	206 315
December Quarter	10 016	36 725	42 903	10 878.9	50.1	213 168
2006						
March Quarter	9 956	36 750	42 191	11 119.5	52.1	226 027
June Quarter	9 786	36 150	41 751	10 765.8	50.2	203 323
Year ended June 2006	44 102.9	51.2	848 833

.. not applicable

(a) Comprising establishments with 40 or more powered sites and cabins, flats, units and villas.

(b) For definitions of short-term and long-term caravan parks, see Glossary.

CAPACITY

Period	Letting entities(a)	Single bedroom	Multiple bedroom	Total	Bed spaces	Persons employed(b)
	no.	no.	no.	no.	no.	no.

REAL ESTATE AGENTS

2005						
June Quarter	166	640	12 833	13 473	70 274	..
September Quarter	170	606	13 123	13 729	74 671	..
December Quarter	168	603	13 354	13 957	75 846	..
2006						
March Quarter	166	664	13 490	14 154	76 305	..
June Quarter	164	601	13 141	13 742	75 441	..
Year ended June 2006

OTHER LETTING ENTITIES

2005						
June Quarter	416	3 917	10 546	14 463	59 605	2 640
September Quarter	412	4 159	10 077	14 236	57 397	2 599
December Quarter	415	4 113	10 322	14 435	58 331	2 650
2006						
March Quarter	418	4 383	10 177	14 560	58 849	2 402
June Quarter	415	4 190	10 349	14 539	58 745	2 395
Year ended June 2006

HOLIDAY FLATS, UNITS AND HOUSES, TOTAL

2005						
June Quarter	582	4 557	23 379	27 936	129 879	..
September Quarter	582	4 765	23 200	27 965	132 068	..
December Quarter	583	4 716	23 676	28 392	134 177	..
2006						
March Quarter	584	5 047	23 667	28 714	135 154	..
June Quarter	579	4 791	23 490	28 281	134 186	..
Year ended June 2006

.. not applicable

(a) The number of owners, managers or real estate agents with 15 or more self-contained units.

(b) Employment numbers exclude real estate agents and their employees.

<i>Period</i>	<i>Unit nights occupied</i>	<i>Unit occupancy rate</i>	<i>Unit lettings</i>	<i>Average length of stay</i>	<i>Takings from accommodation</i>
	'000	%	'000	days	\$'000
.....					
REAL ESTATE AGENTS					
2005					
June Quarter	321.7	26.2	57.8	5.6	23 728
September Quarter	392.0	31.0	66.4	5.9	33 668
December Quarter	437.7	34.1	84.0	5.2	45 320
2006					
March Quarter	492.6	38.7	81.7	6.0	52 386
June Quarter	313.1	25.0	59.5	5.3	27 187
Year ended June 2006	1 635.4	32.2	291.6	5.6	158 560
.....					
OTHER LETTING ENTITIES					
2005					
June Quarter	735.1	56.1	231.7	3.2	75 884
September Quarter	919.0	70.3	271.3	3.4	102 317
December Quarter	905.4	68.6	296.4	3.1	105 436
2006					
March Quarter	858.2	65.7	287.0	3.0	103 799
June Quarter	728.1	55.1	259.8	2.8	81 009
Year ended June 2006	3 410.7	64.9	1 114.5	3.1	392 560
.....					
HOLIDAY FLATS, UNITS AND HOUSES, TOTAL					
2005					
June Quarter	1 056.8	41.7	289.6	3.6	99 612
September Quarter	1 310.9	51.0	337.7	3.9	135 985
December Quarter	1 343.1	51.6	380.4	3.5	150 755
2006					
March Quarter	1 350.8	52.4	368.7	3.7	156 184
June Quarter	1 041.2	40.5	319.3	3.3	108 196
Year ended June 2006	5 046.1	48.9	1 406.1	3.6	551 120

SUMMARY OF VISITOR HOSTELS(a), Australia

	<i>Establishments</i>	<i>Bed spaces</i>	<i>Persons employed</i>	<i>Guest arrivals</i>	<i>Guest nights occupied</i>	<i>Takings from accommodation</i>	<i>Bed occupancy rate</i>	<i>Average length of stay</i>
	no.	no.	no.	no.	no.	\$'000	%	days
2005								
June Quarter	456	47 503	3 420	780 776	1 939 362	43 184	45.2	2.5
September Quarter	452	48 226	3 404	770 540	2 010 095	46 328	45.5	2.6
December Quarter	456	48 332	3 337	822 041	2 110 213	49 893	47.6	2.6
2006								
March Quarter	451	48 042	3 281	843 472	2 324 677	53 337	54.1	2.8
June Quarter	442	47 732	3 277	701 613	1 927 517	45 136	44.6	2.7
Year ended June 2006	3 137 666	8 372 502	194 695	47.9	2.7

.. not applicable

(a) Comprising establishments with 25 or more bed spaces.

STAR GRADING

<i>Period</i>	1	2	3	4	5	<i>Ungraded</i>	<i>Total</i>
---------------	---	---	---	---	---	-----------------	--------------

ESTABLISHMENTS, CAPACITY AND EMPLOYMENT (no.)

June Quarter 2005

Establishments	95	343	835	407	22	413	2 115
Rooms	887	3 306	8 635	3 299	175	3 699	20 001
Bed spaces	2 115	9 656	25 636	9 725	419	10 910	58 461
Persons employed	890	2 809	3 449	1 540	114	3 878	12 680

June Quarter 2006

Establishments	78	312	849	388	18	309	1 954
Rooms	731	3 020	8 765	3 218	149	2 818	18 701
Bed spaces	1 831	8 846	26 606	9 648	354	8 065	55 350
Persons employed	808	2 514	3 815	1 460	92	3 100	11 789

ROOM NIGHTS OCCUPIED ('000)

2005

<i>June Quarter</i>	22.5	111.8	379.0	136.9	6.6	130.6	787.3
---------------------	------	-------	-------	-------	-----	-------	-------

2006

April	6.6	35.9	138.7	51.4	2.0	32.7	267.3
May	6.4	33.1	125.0	42.2	1.5	30.7	238.9
June	6.2	32.9	119.4	41.7	1.5	31.7	233.4
<i>June Quarter</i>	19.2	102.0	383.1	135.3	4.9	95.2	739.7

ROOM OCCUPANCY RATE (%)

2005

<i>June Quarter</i>	27.8	37.2	48.5	45.8	42.2	39.3	43.5
---------------------	------	------	------	------	------	------	------

2006

April	30.0	39.9	53.1	53.3	45.0	40.0	48.1
May	28.4	35.7	46.4	42.6	31.4	36.2	41.7
June	28.1	36.6	45.5	43.7	33.2	38.3	41.9
<i>June Quarter</i>	28.8	37.4	48.3	46.5	36.5	38.2	43.9

GUEST NIGHTS OCCUPIED ('000)

2005

<i>June Quarter</i>	35.3	189.9	684.2	282.4	12.4	234.2	1 438.4
---------------------	------	-------	-------	-------	------	-------	---------

2006

April	9.9	65.0	260.1	110.9	4.1	58.0	508.0
May	9.2	54.9	213.9	83.6	2.9	51.0	415.6
June	9.1	55.8	211.3	88.0	2.9	54.3	421.3
<i>June Quarter</i>	28.3	175.7	685.4	282.5	9.9	163.3	1 345.0

BED OCCUPANCY RATE (%)

2005

<i>June Quarter</i>	18.3	21.6	29.5	32.0	33.2	24.0	27.2
---------------------	------	------	------	------	------	------	------

2006

April	18.1	24.6	32.8	38.4	38.6	25.1	30.9
May	16.3	20.2	26.2	28.1	26.3	21.2	24.5
June	16.6	21.2	26.5	30.7	27.2	23.1	25.6
<i>June Quarter</i>	17.0	22.0	28.5	32.4	30.6	23.1	27.0

continued

Period	STAR GRADING						Total
	1	2	3	4	5	Ungraded	
GUEST ARRIVALS ('000)							
2005							
June Quarter	23.6	120.1	412.7	137.5	7.5	122.9	824.2
2006							
April	5.6	38.4	151.2	52.3	2.3	30.9	280.7
May	5.1	33.2	125.9	40.5	1.8	27.7	234.1
June	5.1	33.4	126.2	41.8	1.7	29.8	238.0
June Quarter	15.9	105.1	403.3	134.5	5.7	88.4	752.9
AVERAGE LENGTH OF STAY (days)							
2005							
June Quarter	1.5	1.6	1.7	2.1	1.7	1.9	1.7
2006							
April	1.8	1.7	1.7	2.1	1.8	1.9	1.8
May	1.8	1.7	1.7	2.1	1.6	1.8	1.8
June	1.8	1.7	1.7	2.1	1.7	1.8	1.8
June Quarter	1.8	1.7	1.7	2.1	1.7	1.8	1.8
TAKINGS FROM ACCOMMODATION (\$'000)							
2005							
June Quarter	1 267	6 938	28 733	17 011	1 253	10 405	65 607
2006							
April	365	2 309	11 230	7 154	424	2 686	24 168
May	340	2 070	9 708	5 475	310	2 336	20 239
June	344	2 080	9 449	5 569	314	2 521	20 277
June Quarter	1 050	6 458	30 387	18 198	1 048	7 543	64 684
AVERAGE TAKINGS PER ROOM NIGHT OCCUPIED (\$)							
2005							
June Quarter	56.4	62.1	75.8	124.3	191.2	79.7	83.3
2006							
April	55.5	64.3	81.0	139.2	210.8	82.1	90.4
May	52.9	62.5	77.7	129.7	213.5	76.0	84.7
June	56.0	63.1	79.1	133.7	211.2	79.5	86.9
June Quarter	54.8	63.3	79.3	134.6	211.7	79.2	87.5
AVERAGE TAKINGS PER ROOM NIGHT AVAILABLE (\$)							
2005							
June Quarter	15.7	23.1	36.8	56.9	80.7	31.3	36.3
2006							
April	16.7	25.6	43.0	74.2	94.9	32.8	43.5
May	15.0	22.3	36.1	55.3	67.1	27.5	35.3
June	15.7	23.1	36.0	58.4	70.2	30.4	36.4
June Quarter	15.8	23.7	38.3	62.6	77.3	30.2	38.4

STAR GRADING

<i>Period</i>	1	2	3	4	5	<i>Ungraded</i>	<i>Total</i>
---------------	---	---	---	---	---	-----------------	--------------

ESTABLISHMENTS, CAPACITY AND EMPLOYMENT (no.)

June Quarter 2005

Establishments	50	308	2 025	1 438	116	214	4 151
Rooms	1 413	9 459	73 114	95 579	24 309	5 949	209 823
Bed spaces	4 667	26 919	213 155	275 386	60 290	15 978	596 395
Persons employed	678	3 733	24 883	46 568	33 953	3 176	112 991

June Quarter 2006

Establishments	53	299	2 078	1 442	105	217	4 194
Rooms	1 541	9 378	74 353	98 531	22 836	6 396	213 035
Bed spaces	5 011	26 906	217 912	285 389	56 786	17 536	609 540
Persons employed	599	3 713	24 992	49 353	32 686	3 304	114 647

ROOM NIGHTS OCCUPIED ('000)

2005

<i>June Quarter</i>	41.5	376.9	3 601.7	5 575.3	1 508.7	238.1	11 342.3
---------------------	------	-------	---------	---------	---------	-------	----------

2006

April	13.2	134.2	1 280.3	1 988.0	497.9	86.6	4 000.4
May	12.8	129.3	1 234.8	1 993.6	511.1	87.2	3 968.8
June	16.2	130.4	1 176.9	1 901.7	467.9	86.3	3 779.5
<i>June Quarter</i>	42.3	394.0	3 692.0	5 883.3	1 477.0	260.1	11 748.7

ROOM OCCUPANCY RATE (%)

2005

<i>June Quarter</i>	33.3	44.2	54.6	64.2	68.3	45.8	59.7
---------------------	------	------	------	------	------	------	------

2006

April	29.9	48.4	58.0	67.3	72.8	47.6	63.0
May	28.1	45.1	54.1	65.3	72.3	46.4	60.5
June	35.1	46.5	53.0	64.3	68.3	46.2	59.3
<i>June Quarter</i>	31.1	46.6	55.0	65.6	71.1	46.7	60.9

GUEST NIGHTS OCCUPIED ('000)

2005

<i>June Quarter</i>	63.4	634.3	6 435.1	9 772.6	2 354.7	369.8	19 630.0
---------------------	------	-------	---------	---------	---------	-------	----------

2006

April	20.4	240.8	2 365.8	3 750.7	813.4	145.6	7 336.6
May	19.5	214.8	2 060.4	3 276.6	756.0	133.3	6 460.6
June	23.8	226.2	2 069.4	3 348.1	726.9	134.6	6 529.1
<i>June Quarter</i>	63.7	681.8	6 495.6	10 375.5	2 296.3	413.6	20 326.3

BED OCCUPANCY RATE (%)

2005

<i>June Quarter</i>	15.6	26.2	33.5	39.1	43.0	26.7	36.4
---------------------	------	------	------	------	------	------	------

2006

April	14.5	30.3	36.6	43.8	47.8	29.9	40.4
May	13.3	26.2	30.8	37.1	43.0	26.5	34.5
June	15.8	28.2	31.8	39.1	42.7	26.6	35.8
<i>June Quarter</i>	14.6	28.2	33.1	40.0	44.5	27.6	36.9

STAR GRADING							
<i>Period</i>	1	2	3	4	5	<i>Ungraded</i>	<i>Total</i>
GUEST ARRIVALS ('000)							
2005							
<i>June Quarter</i>	34.2	358.7	3 269.5	4 145.0	980.6	159.6	8 947.5
2006							
April	12.6	138.0	1 161.4	1 515.9	336.1	62.3	3 226.4
May	10.9	122.9	1 033.6	1 404.0	330.5	57.9	2 959.7
June	13.3	126.1	1 051.4	1 415.6	309.6	57.2	2 973.2
<i>June Quarter</i>	36.7	387.1	3 246.4	4 335.5	976.1	177.3	9 159.3
AVERAGE LENGTH OF STAY (days)							
2005							
<i>June Quarter</i>	1.9	1.8	2.0	2.4	2.4	2.3	2.2
2006							
April	1.6	1.7	2.0	2.5	2.4	2.3	2.3
May	1.8	1.7	2.0	2.3	2.3	2.3	2.2
June	1.8	1.8	2.0	2.4	2.3	2.4	2.2
<i>June Quarter</i>	1.7	1.8	2.0	2.4	2.4	2.3	2.2
TAKINGS FROM ACCOMMODATION (\$'000)							
2005							
<i>June Quarter</i>	2 512	26 323	321 327	722 496	300 152	22 232	1 395 043
2006							
April	853	9 576	121 463	281 235	107 887	8 662	529 677
May	782	8 998	113 167	272 447	106 364	8 476	510 235
June	1 026	9 316	109 611	260 704	97 134	8 806	486 599
<i>June Quarter</i>	2 662	27 890	344 241	814 386	311 386	25 945	1 526 511
AVERAGE TAKINGS PER ROOM NIGHT OCCUPIED (\$)							
2005							
<i>June Quarter</i>	60.6	69.8	89.2	129.6	198.9	93.4	123.0
2006							
April	64.7	71.3	94.9	141.5	216.7	100.0	132.4
May	60.9	69.6	91.6	136.7	208.1	97.3	128.6
June	63.2	71.4	93.1	137.1	207.6	102.0	128.7
<i>June Quarter</i>	63.0	70.8	93.2	138.4	210.8	99.7	129.9
AVERAGE TAKINGS PER ROOM NIGHT AVAILABLE (\$)							
2005							
<i>June Quarter</i>	20.2	30.9	48.7	83.1	135.8	42.8	73.5
2006							
April	19.3	34.5	55.0	95.2	157.7	47.6	83.4
May	17.1	31.4	49.6	89.3	150.4	45.1	77.8
June	22.2	33.2	49.3	88.2	141.8	47.2	76.3
<i>June Quarter</i>	19.6	33.0	51.3	90.9	150.0	46.6	79.1

STAR GRADING

<i>Period</i>	1	2	3	4	5	<i>Ungraded</i>	<i>Total</i>
---------------	---	---	---	---	---	-----------------	--------------

ESTABLISHMENTS, CAPACITY AND EMPLOYMENT (no.)

June Quarter 2005

Establishments	145	651	2 860	1 845	138	627	6 266
Rooms	2 300	12 765	81 749	98 878	24 484	9 648	229 824
Bed spaces	6 782	36 575	238 791	285 111	60 709	26 888	654 856
Persons employed	1 568	6 542	28 332	48 108	34 067	7 054	125 671

June Quarter 2006

Establishments	131	611	2 927	1 830	123	526	6 148
Rooms	2 272	12 398	83 118	101 749	22 985	9 214	231 736
Bed spaces	6 842	35 752	244 518	295 037	57 140	25 601	664 890
Persons employed	1 407	6 227	28 807	50 813	32 778	6 404	126 436

ROOM NIGHTS OCCUPIED ('000)

2005

<i>June Quarter</i>	64.0	488.7	3 980.7	5 712.2	1 515.3	368.7	12 129.6
---------------------	------	-------	---------	---------	---------	-------	----------

2006

April	19.8	170.2	1 419.0	2 039.4	499.9	119.4	4 267.7
May	19.3	162.4	1 359.8	2 035.8	512.6	117.9	4 207.8
June	22.4	163.4	1 296.3	1 943.3	469.4	118.1	4 012.9
<i>June Quarter</i>	61.5	496.0	4 075.2	6 018.5	1 481.9	355.3	12 488.3

ROOM OCCUPANCY RATE (%)

2005

<i>June Quarter</i>	31.2	42.4	54.0	63.6	68.1	43.3	58.3
---------------------	------	------	------	------	------	------	------

2006

April	29.9	46.3	57.5	66.9	72.6	45.3	61.8
May	28.2	42.8	53.3	64.6	72.0	43.2	59.0
June	32.9	44.1	52.2	63.7	68.1	43.8	57.9
<i>June Quarter</i>	30.3	44.4	54.3	65.0	70.9	44.1	59.5

GUEST NIGHTS OCCUPIED ('000)

2005

<i>June Quarter</i>	98.7	824.3	7 119.4	10 055.0	2 367.1	604.0	21 068.4
---------------------	------	-------	---------	----------	---------	-------	----------

2006

April	30.4	305.7	2 625.9	3 861.6	817.5	203.6	7 844.7
May	28.7	269.7	2 274.4	3 360.3	758.9	184.3	6 876.2
June	32.9	282.1	2 280.7	3 436.1	729.8	188.9	6 950.4
<i>June Quarter</i>	91.9	857.5	7 181.0	10 658.0	2 306.2	576.8	21 671.3

BED OCCUPANCY RATE (%)

2005

<i>June Quarter</i>	16.5	25.0	33.1	38.8	42.9	25.6	35.6
---------------------	------	------	------	------	------	------	------

2006

April	15.5	28.9	36.2	43.7	47.8	28.3	39.7
May	14.2	24.7	30.3	36.8	42.9	24.8	33.6
June	16.0	26.5	31.2	38.8	42.6	25.5	35.0
<i>June Quarter</i>	15.2	26.7	32.6	39.7	44.4	26.2	36.1

STAR GRADING

<i>Period</i>	1	2	3	4	5	<i>Ungraded</i>	<i>Total</i>
---------------	---	---	---	---	---	-----------------	--------------

GUEST ARRIVALS ('000)

2005							
<i>June Quarter</i>	57.8	478.8	3 682.2	4 282.5	988.1	282.5	9 771.8
2006							
April	18.3	176.5	1 312.6	1 568.2	338.4	93.2	3 507.1
May	16.0	156.1	1 159.4	1 444.5	332.3	85.6	3 193.8
June	18.4	159.6	1 177.6	1 457.3	311.2	87.0	3 211.2
<i>June Quarter</i>	52.6	492.1	3 649.7	4 470.0	981.9	265.8	9 912.1

AVERAGE LENGTH OF STAY (days)

2005							
<i>June Quarter</i>	1.7	1.7	1.9	2.3	2.4	2.1	2.2
2006							
April	1.7	1.7	2.0	2.5	2.4	2.2	2.2
May	1.8	1.7	2.0	2.3	2.3	2.2	2.2
June	1.8	1.8	1.9	2.4	2.3	2.2	2.2
<i>June Quarter</i>	1.7	1.7	2.0	2.4	2.3	2.2	2.2

TAKINGS FROM ACCOMMODATION (\$'000)

2005							
<i>June Quarter</i>	3 780	33 262	350 061	739 507	301 405	32 637	1 460 650
2006							
April	1 219	11 885	132 693	288 389	108 312	11 348	553 846
May	1 123	11 067	122 875	277 922	106 674	10 812	530 474
June	1 371	11 396	119 060	266 274	97 448	11 328	506 876
<i>June Quarter</i>	3 712	34 348	374 629	832 585	312 434	33 488	1 591 196

AVERAGE TAKINGS PER ROOM NIGHT OCCUPIED (\$)

2005							
<i>June Quarter</i>	59.1	68.1	87.9	129.5	198.9	88.5	120.4
2006							
April	61.6	69.8	93.5	141.4	216.7	95.1	129.8
May	58.2	68.1	90.4	136.5	208.1	91.7	126.1
June	61.2	69.8	91.8	137.0	207.6	96.0	126.3
<i>June Quarter</i>	60.4	69.3	91.9	138.3	210.8	94.3	127.4

AVERAGE TAKINGS PER ROOM NIGHT AVAILABLE (\$)

2005							
<i>June Quarter</i>	18.4	28.9	47.5	82.3	135.4	38.3	70.2
2006							
April	18.4	32.3	53.8	94.5	157.3	43.0	80.2
May	16.4	29.2	48.2	88.2	149.9	39.6	74.3
June	20.1	30.8	47.9	87.3	141.3	42.0	73.1
<i>June Quarter</i>	18.3	30.7	49.9	90.0	149.5	41.5	75.9

<i>Period</i>	<i>New South Wales</i>	<i>Victoria</i>	<i>Queensland</i>	<i>South Australia</i>	<i>Western Australia</i>	<i>Tasmania</i>	<i>Northern Territory</i>	<i>Australian Capital Territory</i>	<i>Australia</i>
ESTABLISHMENTS (no.)									
2005									
September Quarter	656	498	466	162	133	132	12	2	2 061
December Quarter	641	485	455	163	132	128	12	2	2 018
2006									
March Quarter	631	475	445	161	130	126	13	2	1 983
June Quarter	625	471	433	153	132	125	13	2	1 954
ROOMS (no.)									
2005									
September Quarter	6 443	4 739	4 606	1 504	1 095	np	128	np	19 583
December Quarter	6 329	4 657	4 523	1 524	1 080	1 041	np	np	19 293
2006									
March Quarter	6 225	4 561	4 418	1 521	1 084	1 005	np	np	18 971
June Quarter	6 168	4 513	4 294	1 451	1 113	np	137	np	18 701
BED SPACES (no.)									
2005									
September Quarter	18 688	13 421	14 299	4 065	3 485	np	347	np	57 173
December Quarter	18 538	13 106	14 036	4 194	3 434	2 839	np	np	56 539
2006									
March Quarter	18 282	12 993	13 995	4 219	3 426	2 821	np	np	56 164
June Quarter	18 130	12 905	13 506	4 036	3 495	np	370	np	55 350
PERSONS EMPLOYED (no.)									
2005									
September Quarter	3 324	2 951	2 599	1 695	962	np	67	np	12 454
December Quarter	3 429	2 991	2 648	1 787	915	876	np	np	12 705
2006									
March Quarter	3 242	2 852	2 515	1 773	995	843	np	np	12 279
June Quarter	3 068	2 733	2 447	1 755	940	np	60	np	11 789
ROOM NIGHTS OCCUPIED ('000)									
2005									
September Quarter	259.3	165.4	250.3	50.7	46.0	np	4.4	np	806.3
December Quarter	253.2	183.0	222.4	55.7	45.4	43.7	np	np	807.5
2006									
March Quarter	249.2	191.5	200.3	56.2	42.2	55.2	np	np	798.3
June Quarter	230.5	166.2	207.4	50.3	44.6	np	4.3	np	739.7
ROOM OCCUPANCY RATE (%)									
2005									
September Quarter	43.8	38.0	59.2	36.8	45.9	np	37.6	np	44.9
December Quarter	44.2	43.4	53.6	39.8	46.6	45.8	np	np	46.0
2006									
March Quarter	45.0	47.0	50.7	41.0	45.1	61.3	np	np	47.3
June Quarter	41.7	40.8	53.3	38.3	44.4	np	34.9	np	43.9

np not available for publication but included in totals where applicable, unless otherwise indicated

<i>Period</i>	<i>New South Wales</i>	<i>Victoria</i>	<i>Queensland</i>	<i>South Australia</i>	<i>Western Australia</i>	<i>Tasmania</i>	<i>Northern Territory</i>	<i>Australian Capital Territory</i>	<i>Australia</i>
GUEST NIGHTS OCCUPIED ('000)									
2005									
September Quarter	483.8	306.0	464.8	87.8	96.0	np	8.3	np	1 502.3
December Quarter	477.7	344.7	415.2	97.3	95.2	81.4	np	np	1 520.0
2006									
March Quarter	470.9	369.7	370.2	94.3	88.6	110.8	np	np	1 511.2
June Quarter	414.8	302.8	379.0	81.2	92.7	np	7.9	np	1 345.0
BED OCCUPANCY RATE (%)									
2005									
September Quarter	28.2	24.8	35.4	23.6	30.1	np	25.9	np	28.6
December Quarter	28.5	29.1	32.3	25.3	30.6	31.2	np	np	29.6
2006									
March Quarter	29.0	31.9	29.6	24.8	30.0	43.8	np	np	30.3
June Quarter	25.6	26.0	31.0	22.2	29.4	np	23.6	np	27.0
GUEST ARRIVALS ('000)									
2005									
September Quarter	293.1	180.0	234.8	49.9	44.3	np	5.0	np	841.3
December Quarter	282.5	205.7	207.2	52.9	42.0	48.4	np	np	843.8
2006									
March Quarter	269.3	206.1	185.8	53.5	38.2	65.2	np	np	822.6
June Quarter	241.9	180.2	199.1	47.0	40.4	np	4.5	np	752.9
AVERAGE LENGTH OF STAY (<i>days</i>)									
2005									
September Quarter	1.7	1.7	2.0	1.8	2.2	np	1.6	np	1.8
December Quarter	1.7	1.7	2.0	1.8	2.3	1.7	np	np	1.8
2006									
March Quarter	1.7	1.8	2.0	1.8	2.3	1.7	np	np	1.8
June Quarter	1.7	1.7	1.9	1.7	2.3	np	1.7	np	1.8
TAKINGS FROM ACCOMMODATION (\$'000)									
2005									
September Quarter	23 501	14 843	19 231	3 890	4 773	np	274	np	69 336
December Quarter	22 818	16 803	17 694	4 545	4 992	4 528	np	np	71 657
2006									
March Quarter	23 222	17 628	15 954	4 757	4 769	6 112	np	np	72 685
June Quarter	20 456	14 672	16 586	4 154	4 742	np	311	np	64 684
AVERAGE TAKINGS PER ROOM NIGHT OCCUPIED (\$)									
2005									
September Quarter	90.6	89.7	76.8	76.7	103.6	np	61.8	np	86.0
December Quarter	90.1	91.8	79.5	81.6	109.9	103.5	np	np	88.7
2006									
March Quarter	93.2	92.1	79.6	84.7	113.1	110.7	np	np	91.0
June Quarter	88.7	88.3	80.0	82.5	106.4	np	71.5	np	87.5

np not available for publication but included in totals where applicable, unless otherwise indicated

<i>Period</i>	<i>New South Wales</i>	<i>Victoria</i>	<i>Queensland</i>	<i>South Australia</i>	<i>Western Australia</i>	<i>Tasmania</i>	<i>Northern Territory</i>	<i>Australian Capital Territory</i>	<i>Australia</i>
AVERAGE TAKINGS PER ROOM NIGHT AVAILABLE (\$)									
2005									
September Quarter	39.7	34.1	45.5	28.2	47.6	np	23.3	np	38.6
December Quarter	39.8	39.9	42.7	32.5	51.2	47.5	np	np	40.8
2006									
March Quarter	41.9	43.3	40.4	34.8	51.0	67.9	np	np	43.0
June Quarter	37.0	36.1	42.7	31.6	47.2	np	24.9	np	38.4

np not available for publication but included in totals where applicable, unless otherwise indicated

<i>Period</i>	<i>New South Wales</i>	<i>Victoria</i>	<i>Queensland</i>	<i>South Australia</i>	<i>Western Australia</i>	<i>Tasmania</i>	<i>Northern Territory</i>	<i>Australian Capital Territory</i>	<i>Australia</i>
ESTABLISHMENTS (no.)									
2005									
March Quarter	1 393	776	1 058	255	351	153	93	58	4 137
June Quarter	1 396	780	1 063	257	350	154	93	58	4 151
September Quarter	1 406	781	1 069	258	350	154	95	59	4 172
December Quarter	1 405	781	1 069	254	355	153	94	58	4 169
2006									
March Quarter	1 416	786	1 073	251	352	157	94	58	4 187
June Quarter	1 418	795	1 070	254	350	154	94	59	4 194
ROOMS (no.)									
2005									
March Quarter	65 986	36 371	56 610	11 741	20 646	6 331	6 399	4 938	209 022
June Quarter	66 227	36 443	56 652	11 779	20 890	6 401	6 472	4 959	209 823
September Quarter	67 506	36 535	56 896	11 873	20 807	6 519	6 541	4 969	211 646
December Quarter	67 757	36 681	57 127	11 726	21 687	6 419	6 477	4 910	212 784
2006									
March Quarter	68 062	37 087	56 843	11 661	21 036	6 520	6 488	4 901	212 598
June Quarter	68 249	37 339	56 682	11 671	21 082	6 458	6 499	5 055	213 035
BED SPACES (no.)									
2005									
March Quarter	184 025	98 571	173 322	32 375	57 073	18 555	18 769	13 552	596 242
June Quarter	183 885	98 663	173 124	32 581	56 981	18 528	18 977	13 656	596 395
September Quarter	186 668	98 992	174 612	32 970	56 996	18 565	19 062	13 832	601 697
December Quarter	186 259	99 226	175 723	32 173	58 741	18 614	18 873	13 583	603 192
2006									
March Quarter	189 188	100 882	176 667	32 087	57 356	18 962	18 901	13 342	607 385
June Quarter	189 699	101 918	176 640	31 907	57 448	18 673	19 110	14 145	609 540
PERSONS EMPLOYED (no.)									
2005									
March Quarter	32 744	21 529	31 612	7 202	10 078	4 606	2 845	2 548	113 164
June Quarter	32 735	21 608	31 425	7 199	9 968	4 421	3 163	2 472	112 991
September Quarter	34 076	21 650	31 736	7 241	10 082	4 555	3 072	2 535	114 947
December Quarter	33 813	21 659	31 790	7 280	10 265	4 643	2 979	2 379	114 808
2006									
March Quarter	33 477	21 709	31 224	7 201	10 235	4 708	3 013	2 475	114 042
June Quarter	33 754	21 715	31 268	7 312	10 426	4 436	3 137	2 599	114 647
ROOM NIGHTS OCCUPIED ('000)									
2005									
March Quarter	3 816.5	2 141.5	3 139.5	639.8	1 129.4	414.5	265.7	294.4	11 841.3
June Quarter	3 488.3	1 953.6	3 197.1	599.6	1 119.6	303.0	368.7	312.5	11 342.3
September Quarter	3 849.4	2 011.8	3 783.8	630.2	1 214.0	265.4	456.5	324.3	12 535.4
December Quarter	3 906.0	2 126.0	3 556.9	664.0	1 274.2	363.9	331.5	320.9	12 543.5
2006									
March Quarter	3 850.9	2 197.4	3 262.2	673.9	1 224.7	428.0	278.3	310.1	12 225.5
June Quarter	3 613.3	2 051.8	3 251.1	632.5	1 198.2	300.5	382.5	318.8	11 748.7
Year ended June 2005	14 774.1	8 031.8	13 450.8	2 495.0	4 559.1	1 319.7	1 415.2	1 220.2	47 265.8
Year ended June 2006	15 219.7	8 386.9	13 853.9	2 600.7	4 911.2	1 357.7	1 448.8	1 274.1	49 053.0

<i>Period</i>	<i>New South Wales</i>	<i>Victoria</i>	<i>Queensland</i>	<i>South Australia</i>	<i>Western Australia</i>	<i>Tasmania</i>	<i>Northern Territory</i>	<i>Australian Capital Territory</i>	<i>Australia</i>
ROOM OCCUPANCY RATE (%)									
2005									
March Quarter	65.4	66.3	62.0	60.6	61.0	72.8	46.3	66.2	63.6
June Quarter	58.5	59.4	62.0	56.0	59.1	52.1	63.2	69.2	59.7
September Quarter	62.0	60.0	72.3	57.8	63.5	44.3	75.9	70.9	64.4
December Quarter	63.5	63.7	67.8	61.6	64.0	61.6	55.7	71.0	64.5
2006									
March Quarter	63.4	66.4	63.8	64.2	64.7	74.0	47.7	70.3	64.2
June Quarter	58.7	61.1	63.0	59.6	62.5	51.1	64.7	69.3	60.9
Year ended June 2005	62.5	61.8	65.9	58.3	60.5	57.5	60.0	68.1	62.8
Year ended June 2006	61.9	62.8	66.8	60.7	63.7	57.6	61.1	70.4	63.5
GUEST NIGHTS OCCUPIED ('000)									
2005									
March Quarter	6 846.8	3 725.7	6 464.7	1 068.9	1 990.7	806.7	447.9	478.5	21 829.9
June Quarter	5 856.9	3 199.1	6 131.6	942.3	1 835.5	540.3	633.0	491.4	19 630.0
September Quarter	6 730.0	3 375.0	7 500.0	989.7	2 050.4	463.2	817.1	570.3	22 495.5
December Quarter	6 849.3	3 572.1	7 128.6	1 098.1	2 170.2	654.8	556.2	516.1	22 545.3
2006									
March Quarter	6 746.8	3 754.7	6 480.7	1 114.2	2 109.8	826.8	476.9	484.4	21 994.2
June Quarter	6 069.0	3 390.3	6 172.4	1 001.0	1 946.4	534.7	699.0	513.6	20 326.3
Year ended June 2005	25 906.5	13 598.4	26 997.3	4 069.0	7 845.5	2 431.2	2 450.0	2 003.3	85 301.3
Year ended June 2006	26 395.0	14 092.1	27 281.6	4 202.9	8 276.8	2 479.4	2 549.2	2 084.4	87 361.3
BED OCCUPANCY RATE (%)									
2005									
March Quarter	42.2	42.7	41.6	36.7	38.9	48.3	26.7	39.2	41.1
June Quarter	35.4	36.0	38.9	31.8	35.5	32.1	37.0	39.5	36.4
September Quarter	39.2	37.2	46.7	32.6	39.2	27.2	46.6	44.8	40.7
December Quarter	40.6	39.7	44.2	37.1	40.2	38.2	32.1	41.3	41.0
2006									
March Quarter	40.1	41.8	40.8	38.6	40.9	49.2	28.0	40.3	40.5
June Quarter	35.6	37.1	38.4	34.5	37.2	31.5	40.2	39.9	36.9
Year ended June 2005	39.5	38.8	43.2	34.2	37.9	36.2	35.8	40.6	39.8
Year ended June 2006	38.8	39.0	42.5	35.7	39.4	36.5	36.8	41.6	39.7
GUEST ARRIVALS ('000)									
2005									
March Quarter	3 193.0	1 674.5	2 288.1	511.8	811.4	432.6	223.0	206.8	9 341.2
June Quarter	2 978.2	1 554.3	2 395.3	472.1	756.3	289.1	296.3	206.0	8 947.5
September Quarter	3 241.7	1 619.9	2 739.5	506.3	872.7	247.9	384.8	240.3	9 853.1
December Quarter	3 239.8	1 670.7	2 602.3	522.3	906.2	342.7	281.9	205.8	9 771.8
2006									
March Quarter	3 171.3	1 691.3	2 344.1	533.2	872.6	416.8	237.7	198.4	9 465.5
June Quarter	3 054.2	1 609.2	2 375.8	499.1	806.9	268.2	323.6	222.2	9 159.3
Year ended June 2005	12 585.6	6 408.7	9 926.6	1 997.6	3 260.8	1 305.4	1 238.9	857.0	37 580.6
Year ended June 2006	12 707.0	6 591.0	10 061.6	2 061.0	3 458.4	1 275.7	1 228.1	866.7	38 249.6

<i>Period</i>	<i>New South Wales</i>	<i>Victoria</i>	<i>Queensland</i>	<i>South Australia</i>	<i>Western Australia</i>	<i>Tasmania</i>	<i>Northern Territory</i>	<i>Australian Capital Territory</i>	<i>Australia</i>
AVERAGE LENGTH OF STAY (<i>days</i>)									
2005									
March Quarter	2.1	2.2	2.8	2.1	2.5	1.9	2.0	2.3	2.3
June Quarter	2.0	2.1	2.6	2.0	2.4	1.9	2.1	2.4	2.2
September Quarter	2.1	2.1	2.7	2.0	2.3	1.9	2.1	2.4	2.3
December Quarter	2.1	2.1	2.7	2.1	2.4	1.9	2.0	2.5	2.3
2006									
March Quarter	2.1	2.2	2.8	2.1	2.4	2.0	2.0	2.4	2.3
June Quarter	2.0	2.1	2.6	2.0	2.4	2.0	2.2	2.3	2.2
Year ended June 2005	2.1	2.1	2.7	2.0	2.4	1.9	2.0	2.3	2.3
Year ended June 2006	2.1	2.1	2.7	2.0	2.4	1.9	2.1	2.4	2.3
TAKINGS FROM ACCOMMODATION (\$'000)									
2005									
March Quarter	533 042	291 678	386 039	70 527	129 037	48 749	30 911	35 347	1 525 330
June Quarter	455 050	249 554	378 395	63 114	129 486	34 488	46 413	38 543	1 395 043
September Quarter	527 909	273 252	475 123	67 918	143 553	29 882	60 885	39 725	1 618 246
December Quarter	550 487	289 807	461 511	74 426	151 796	44 112	39 971	38 766	1 650 876
2006									
March Quarter	551 237	326 867	418 231	79 946	148 824	53 282	31 635	39 186	1 649 208
June Quarter	490 052	281 640	411 070	71 800	146 961	35 672	47 974	41 342	1 526 511
Year ended June 2005	1 981 097	1 050 368	1 631 550	267 541	518 987	149 989	174 480	145 106	5 919 119
Year ended June 2006	2 119 684	1 171 567	1 765 936	294 090	591 133	162 948	180 465	159 019	6 444 842
AVERAGE TAKINGS PER ROOM NIGHT OCCUPIED (\$)									
2005									
March Quarter	139.7	136.2	123.0	110.2	114.3	117.6	116.4	120.1	128.8
June Quarter	130.5	127.7	118.4	105.3	115.7	113.8	125.9	123.3	123.0
September Quarter	137.1	135.8	125.6	107.8	118.2	112.6	133.4	122.5	129.1
December Quarter	140.9	136.3	129.8	112.1	119.1	121.2	120.6	120.8	131.6
2006									
March Quarter	143.1	148.8	128.2	118.6	121.5	124.5	113.7	126.4	134.9
June Quarter	135.6	137.3	126.4	113.5	122.6	118.7	125.4	129.7	129.9
Year ended June 2005	134.1	130.8	121.3	107.2	113.8	113.7	123.3	118.9	125.2
Year ended June 2006	139.3	139.7	127.5	113.1	120.4	120.0	124.6	124.8	131.4
AVERAGE TAKINGS PER ROOM NIGHT AVAILABLE (\$)									
2005									
March Quarter	91.3	90.4	76.2	66.8	69.7	85.6	53.9	79.5	81.9
June Quarter	76.3	75.9	73.4	58.9	68.3	59.4	79.5	85.4	73.5
September Quarter	85.0	81.5	90.8	62.2	75.1	49.9	101.2	86.9	83.2
December Quarter	89.4	86.9	88.0	69.0	76.2	74.7	67.2	85.8	84.9
2006									
March Quarter	90.8	98.7	81.8	76.2	78.6	92.2	54.2	88.8	86.6
June Quarter	79.6	83.9	79.7	67.6	76.6	60.7	81.1	89.9	79.1
Year ended June 2005	83.9	80.9	80.0	62.5	68.9	65.4	74.0	81.0	78.6
Year ended June 2006	86.2	87.7	85.1	68.7	76.6	69.2	76.1	87.9	83.4

Period	New South Wales	Victoria	Queensland	South Australia	Western Australia	Tasmania	Northern Territory	Australian Capital Territory	Australia
ESTABLISHMENTS (no.)									
2005									
September Quarter	2 062	1 279	1 535	420	483	286	107	61	6 233
December Quarter	2 046	1 266	1 524	417	487	281	106	60	6 187
2006									
March Quarter	2 047	1 261	1 518	412	482	283	107	60	6 170
June Quarter	2 043	1 266	1 503	407	482	279	107	61	6 148
ROOMS (no.)									
2005									
September Quarter	73 949	41 274	61 502	13 377	21 902	np	6 669	np	231 229
December Quarter	74 086	41 338	61 650	13 250	22 767	7 460	np	np	232 077
2006									
March Quarter	74 287	41 648	61 261	13 182	22 120	7 525	np	np	231 569
June Quarter	74 417	41 852	60 976	13 122	22 195	np	6 636	np	231 736
BED SPACES (no.)									
2005									
September Quarter	205 356	112 413	188 911	37 035	60 481	np	19 409	np	658 870
December Quarter	204 797	112 332	189 759	36 367	62 175	21 453	np	np	659 731
2006									
March Quarter	207 470	113 875	190 662	36 306	60 782	21 783	np	np	663 549
June Quarter	207 829	114 823	190 146	35 943	60 943	np	19 480	np	664 890
PERSONS EMPLOYED (no.)									
2005									
September Quarter	37 400	24 601	34 335	8 936	11 044	np	3 139	np	127 401
December Quarter	37 242	24 650	34 438	9 067	11 180	5 519	np	np	127 513
2006									
March Quarter	36 719	24 561	33 739	8 974	11 230	5 551	np	np	126 321
June Quarter	36 822	24 448	33 715	9 067	11 366	np	3 197	np	126 436
ROOM NIGHTS OCCUPIED ('000)									
2005									
September Quarter	4 108.7	2 177.3	4 034.1	681.0	1 260.1	np	460.9	np	13 341.7
December Quarter	4 159.2	2 309.0	3 779.3	719.8	1 319.6	407.6	np	np	13 351.0
2006									
March Quarter	4 100.1	2 388.8	3 462.5	730.1	1 266.9	483.2	np	np	13 023.8
June Quarter	3 843.8	2 217.9	3 458.5	682.9	1 242.8	np	386.8	np	12 488.3
ROOM OCCUPANCY RATE (%)									
2005									
September Quarter	60.4	57.5	71.3	55.4	62.6	np	75.1	np	62.8
December Quarter	61.8	61.4	66.8	59.1	63.2	59.4	np	np	63.0
2006									
March Quarter	61.9	64.3	62.8	61.5	63.8	72.3	np	np	62.8
June Quarter	57.3	58.9	62.4	57.2	61.6	np	64.1	np	59.5

np not available for publication but included in totals where applicable, unless otherwise indicated

<i>Period</i>	<i>New South Wales</i>	<i>Victoria</i>	<i>Queensland</i>	<i>South Australia</i>	<i>Western Australia</i>	<i>Tasmania</i>	<i>Northern Territory</i>	<i>Australian Capital Territory</i>	<i>Australia</i>
GUEST NIGHTS OCCUPIED ('000)									
2005									
September Quarter	7 213.8	3 680.9	7 964.7	1 077.5	2 146.4	np	825.3	np	23 997.7
December Quarter	7 326.9	3 916.8	7 543.8	1 195.4	2 265.5	736.2	np	np	24 065.3
2006									
March Quarter	7 217.7	4 124.4	6 850.9	1 208.5	2 198.4	937.6	np	np	23 505.4
June Quarter	6 483.8	3 693.1	6 551.4	1 082.1	2 039.1	np	707.0	np	21 671.3
BED OCCUPANCY RATE (%)									
2005									
September Quarter	38.2	35.7	45.8	31.7	38.6	np	46.2	np	39.6
December Quarter	39.5	38.5	43.3	35.7	39.7	37.3	np	np	40.0
2006									
March Quarter	39.1	40.7	39.9	37.0	40.3	48.5	np	np	39.6
June Quarter	34.7	35.9	37.9	33.1	36.8	np	39.9	np	36.1
GUEST ARRIVALS ('000)									
2005									
September Quarter	3 534.8	1 799.8	2 974.2	556.3	916.9	np	389.9	np	10 694.4
December Quarter	3 522.3	1 876.3	2 809.5	575.2	948.2	391.2	np	np	10 615.6
2006									
March Quarter	3 440.6	1 897.5	2 529.8	586.6	910.8	482.1	np	np	10 288.1
June Quarter	3 296.1	1 789.4	2 574.9	546.1	847.3	np	328.1	np	9 912.1
AVERAGE LENGTH OF STAY (days)									
2005									
September Quarter	2.0	2.0	2.7	1.9	2.3	np	2.1	np	2.2
December Quarter	2.1	2.1	2.7	2.1	2.4	1.9	np	np	2.3
2006									
March Quarter	2.1	2.2	2.7	2.1	2.4	1.9	np	np	2.3
June Quarter	2.0	2.1	2.5	2.0	2.4	np	2.2	np	2.2
TAKINGS FROM ACCOMMODATION (\$'000)									
2005									
September Quarter	551 410	288 095	494 354	71 808	148 325	np	61 158	np	1 687 582
December Quarter	573 305	306 610	479 205	78 971	156 788	48 640	np	np	1 722 533
2006									
March Quarter	574 459	344 495	434 185	84 704	153 593	59 395	np	np	1 721 893
June Quarter	510 508	296 312	427 656	75 954	151 703	np	48 285	np	1 591 196
AVERAGE TAKINGS PER ROOM NIGHT OCCUPIED (\$)									
2005									
September Quarter	134.2	132.3	122.5	105.5	117.7	np	132.7	np	126.5
December Quarter	137.8	132.8	126.8	109.7	118.8	119.3	np	np	129.0
2006									
March Quarter	140.1	144.2	125.4	116.0	121.2	122.9	np	np	132.2
June Quarter	132.8	133.6	123.7	111.2	122.1	np	124.8	np	127.4

np not available for publication but included in totals where applicable, unless otherwise indicated

<i>Period</i>	<i>New South Wales</i>	<i>Victoria</i>	<i>Queensland</i>	<i>South Australia</i>	<i>Western Australia</i>	<i>Tasmania</i>	<i>Northern Territory</i>	<i>Australian Capital Territory</i>	<i>Australia</i>
AVERAGE TAKINGS PER ROOM NIGHT AVAILABLE (\$)									
2005									
September Quarter	81.1	76.1	87.4	58.4	73.7	np	99.7	np	79.4
December Quarter	85.2	81.6	84.7	64.8	75.0	70.9	np	np	81.3
2006									
March Quarter	86.7	92.7	78.8	71.4	77.4	88.9	np	np	83.0
June Quarter	76.1	78.7	77.1	63.6	75.2	np	80.0	np	75.9

np not available for publication but included in totals where applicable, unless otherwise indicated

Period	New South Wales	Victoria	Queensland	South Australia	Western Australia	Tasmania	Northern Territory	Australian Capital Territory	Australia
ESTABLISHMENTS (no.)									
2005									
June Quarter	463	367	268	141	184	45	50	3	1 521
September Quarter	460	364	265	138	180	45	49	3	1 504
December Quarter	455	366	263	137	178	45	48	3	1 495
2006									
March Quarter	449	363	262	136	177	45	48	3	1 483
June Quarter	448	359	260	136	176	45	48	3	1 475
ON-SITE VANS (no.)									
2005									
June Quarter	6 513	3 059	1 861	387	1 323	np	np	np	13 563
September Quarter	6 952	2 971	1 934	431	1 361	np	np	np	14 055
December Quarter	6 806	3 012	1 784	454	1 452	np	89	np	13 930
2006									
March Quarter	6 630	2 670	1 772	403	1 363	np	np	np	13 277
June Quarter	6 894	2 742	1 703	406	1 278	np	np	np	13 469
OTHER POWERED SITES (no.)									
2005									
June Quarter	42 114	33 628	19 669	12 307	15 981	np	np	np	131 162
September Quarter	41 170	32 609	19 522	12 142	15 557	np	np	np	128 427
December Quarter	41 495	33 034	19 300	11 981	15 281	np	4 286	np	128 398
2006									
March Quarter	41 498	33 585	19 222	12 027	15 321	np	np	np	128 939
June Quarter	40 632	33 201	19 352	11 917	15 164	np	np	np	127 662
UNPOWERED SITES (no.)									
2005									
June Quarter	11 692	9 492	5 810	4 419	3 366	np	np	np	39 574
September Quarter	11 246	9 615	5 866	4 185	3 352	np	np	np	38 974
December Quarter	11 373	9 615	5 727	4 452	3 367	np	2 669	np	39 231
2006									
March Quarter	11 380	9 848	5 713	4 404	3 620	np	np	np	39 714
June Quarter	11 481	9 709	5 782	4 468	3 836	np	np	np	40 035
CABINS FLATS, UNITS AND VILLAS (no.)									
2005									
June Quarter	9 666	4 695	4 059	2 340	2 727	np	np	np	25 160
September Quarter	9 779	4 813	3 955	2 278	2 520	np	np	np	25 005
December Quarter	9 739	5 043	3 983	2 240	2 489	np	949	np	25 191
2006									
March Quarter	9 594	4 967	4 054	2 292	2 612	np	np	np	25 255
June Quarter	9 635	4 912	4 116	2 316	2 574	np	np	np	25 309
TOTAL CAPACITY (no.)									
2005									
June Quarter	69 985	50 874	31 399	19 453	23 397	np	np	np	209 459
September Quarter	69 147	50 008	31 277	19 036	22 790	np	np	np	206 461
December Quarter	69 413	50 704	30 794	19 127	22 589	np	7 993	np	206 750
2006									
March Quarter	69 102	51 070	30 761	19 126	22 916	np	np	np	207 185
June Quarter	68 642	50 564	30 953	19 107	22 852	np	np	np	206 475

np not available for publication but included in totals where applicable, unless otherwise indicated

(a) Comprising establishments with 40 or more powered sites and cabins, flats, units and villas.

Period	New South Wales	Victoria	Queensland	South Australia	Western Australia	Tasmania	Northern Territory	Australian Capital Territory	Australia
PERSONS EMPLOYED (no.)									
2005									
June Quarter	2 783	1 685	1 459	761	1 130	np	np	np	8 683
September Quarter	2 755	1 606	1 413	768	1 112	np	np	np	8 493
December Quarter	2 929	1 757	1 372	742	1 085	np	464	np	8 689
2006									
March Quarter	2 885	1 729	1 372	751	1 082	np	np	np	8 636
June Quarter	2 775	1 597	1 404	736	1 134	np	np	np	8 496
SITES OCCUPIED BY LONG-TERM GUESTS (no.)									
2005									
June Quarter	6 608	3 044	4 904	1 143	2 709	np	np	np	19 482
September Quarter	6 457	3 012	5 061	963	2 875	np	np	np	19 408
December Quarter	6 467	3 111	4 744	1 023	2 710	np	500	np	19 038
2006									
March Quarter	6 447	3 146	4 855	1 059	2 706	np	np	np	19 156
June Quarter	6 240	2 908	4 874	1 047	2 918	np	np	np	18 985
OTHER SITES PERMANENTLY RESERVED (no.)									
2005									
June Quarter	20 069	14 686	1 226	2 312	2 127	np	np	np	41 283
September Quarter	19 937	14 979	1 138	2 385	1 989	np	np	np	41 358
December Quarter	19 808	15 190	1 119	2 354	1 967	np	50	np	41 405
2006									
March Quarter	19 889	14 816	963	2 252	1 861	np	np	np	40 624
June Quarter	19 463	14 790	925	2 186	1 969	np	np	np	40 240
SITE NIGHTS OCCUPIED ('000)									
2005									
June Quarter	3 388.7	2 065.6	1 363.1	638.6	920.1	np	np	np	8 832.6
September Quarter	3 322.4	2 010.3	1 740.5	565.1	1 032.8	np	np	np	9 208.7
December Quarter	3 482.0	2 205.4	1 201.1	655.6	875.6	np	160.3	np	8 790.0
2006									
March Quarter	3 623.1	2 436.1	1 032.5	736.9	848.9	np	np	np	9 032.9
June Quarter	3 287.6	2 054.0	1 351.2	627.8	953.8	np	np	np	8 729.2
SITE OCCUPANCY RATE (%)									
2005									
June Quarter	53.2	45.7	47.7	36.1	43.3	np	np	np	46.6
September Quarter	52.3	45.7	60.5	32.4	49.3	np	np	np	49.1
December Quarter	54.5	48.1	42.4	37.3	42.3	np	22.0	np	46.5
2006									
March Quarter	58.3	53.0	37.4	42.8	41.2	np	np	np	48.5
June Quarter	52.7	45.6	48.0	36.1	45.9	np	np	np	46.8

np not available for publication but included in totals where applicable, unless otherwise indicated

(a) Comprising establishments with 40 or more powered sites and cabins, flats, units and villas.

<i>Period</i>	<i>New South Wales</i>	<i>Victoria</i>	<i>Queensland</i>	<i>South Australia</i>	<i>Western Australia</i>	<i>Tasmania</i>	<i>Northern Territory</i>	<i>Australian Capital Territory</i>	<i>Australia</i>
TAKINGS FROM ACCOMMODATION (\$'000)									
2005									
June Quarter	52 686	24 687	31 275	12 519	20 196	np	np	np	154 516
September Quarter	52 572	25 015	42 250	11 168	23 678	np	np	np	169 549
December Quarter	68 601	32 574	29 151	14 123	21 490	np	4 896	np	175 370
2006									
March Quarter	76 700	40 057	24 147	16 699	21 627	np	np	np	189 208
June Quarter	56 011	26 584	35 126	13 256	23 472	np	np	np	168 334

np not available for publication but included in totals where applicable, unless otherwise indicated

(a) Comprising establishments with 40 or more powered sites and cabins, flats, units and villas.

<i>Period</i>	<i>New South Wales</i>	<i>Victoria</i>	<i>Queensland</i>	<i>South Australia</i>	<i>Western Australia</i>	<i>Tasmania</i>	<i>Northern Territory</i>	<i>Australian Capital Territory</i>	<i>Australia</i>
ESTABLISHMENTS (no.)									
2005									
June Quarter	82	47	78	9	25	1	4	1	247
September Quarter	79	46	76	9	25	1	4	—	240
December Quarter	79	46	75	9	25	1	4	—	239
2006									
March Quarter	78	44	74	9	25	1	4	—	235
June Quarter	78	44	74	9	26	1	3	—	235
ON-SITE VANS (no.)									
2005									
June Quarter	1 492	504	2 236	159	348	np	np	np	4 858
September Quarter	1 347	461	2 035	165	347	np	np	—	4 372
December Quarter	1 210	463	1 987	157	340	np	np	—	4 173
2006									
March Quarter	1 223	442	2 072	159	342	np	np	—	4 254
June Quarter	1 261	429	2 047	159	375	np	np	—	4 287
OTHER POWERED SITES (no.)									
2005									
June Quarter	6 409	3 799	5 066	815	2 118	np	np	np	18 561
September Quarter	6 058	3 784	5 074	814	2 131	np	np	—	18 224
December Quarter	6 138	3 791	4 936	814	2 067	np	np	—	18 117
2006									
March Quarter	6 009	3 675	4 768	811	2 126	np	np	—	17 764
June Quarter	5 920	3 753	4 806	802	2 135	np	np	—	17 743
UNPOWERED SITES (no.)									
2005									
June Quarter	834	402	450	105	164	np	np	np	2 036
September Quarter	844	360	461	121	202	np	np	—	2 256
December Quarter	855	352	465	121	205	np	np	—	2 079
2006									
March Quarter	838	353	463	121	218	np	np	—	2 074
June Quarter	891	353	447	121	188	np	np	—	2 081
CABINS FLATS, UNITS AND VILLAS (no.)									
2005									
June Quarter	2 223	1 446	1 719	220	573	np	np	np	6 226
September Quarter	2 137	1 279	1 717	221	602	np	np	—	6 005
December Quarter	2 172	1 381	1 703	232	673	np	np	—	6 209
2006									
March Quarter	2 219	1 369	1 736	233	608	np	np	—	6 213
June Quarter	2 275	1 320	1 785	254	604	np	np	—	6 286

— nil or rounded to zero (including null cells)

np not available for publication but included in totals where applicable, unless otherwise indicated

(a) Comprising establishments with 40 or more powered sites and cabins, flats, units and villas.

<i>Period</i>	<i>New South Wales</i>	<i>Victoria</i>	<i>Queensland</i>	<i>South Australia</i>	<i>Western Australia</i>	<i>Tasmania</i>	<i>Northern Territory</i>	<i>Australian Capital Territory</i>	<i>Australia</i>
TOTAL CAPACITY (no.)									
2005									
June Quarter	10 958	6 151	9 471	1 299	3 203	np	np	np	31 681
September Quarter	10 386	5 884	9 287	1 321	3 282	np	np	—	30 857
December Quarter	10 375	5 987	9 091	1 324	3 285	np	np	—	30 578
2006									
March Quarter	10 289	5 839	9 039	1 324	3 294	np	np	—	30 305
June Quarter	10 347	5 855	9 085	1 336	3 302	np	np	—	30 397
PERSONS EMPLOYED (no.)									
2005									
June Quarter	456	239	476	46	141	np	np	np	1 381
September Quarter	426	232	442	43	137	np	np	—	1 300
December Quarter	446	231	434	53	142	np	np	—	1 327
2006									
March Quarter	423	233	449	47	147	np	np	—	1 320
June Quarter	415	222	438	47	154	np	np	—	1 290
SITES OCCUPIED BY LONG-TERM GUESTS (no.)									
2005									
June Quarter	5 869	3 327	6 189	777	1 953	np	np	np	18 362
September Quarter	5 540	3 260	6 280	839	1 988	np	np	—	18 051
December Quarter	5 532	3 255	6 034	733	1 975	np	np	—	17 687
2006									
March Quarter	5 479	3 216	6 070	684	1 987	np	np	—	17 594
June Quarter	5 253	3 159	6 048	638	1 946	np	np	—	17 165
OTHER SITES PERMANENTLY RESERVED (no.)									
2005									
June Quarter	1 018	386	126	—	33	np	np	np	1 649
September Quarter	892	404	153	5	39	np	np	—	1 560
December Quarter	906	344	150	—	19	np	np	—	1 498
2006									
March Quarter	855	332	263	—	21	np	np	—	1 567
June Quarter	848	316	269	1	10	np	np	—	1 511
SITE NIGHTS OCCUPIED ('000)									
2005									
June Quarter	727.2	384.7	700.1	81.4	218.5	np	np	np	2 155.9
September Quarter	690.5	373.2	711.4	93.3	229.1	np	np	—	2 130.0
December Quarter	701.6	379.2	672.5	82.0	228.3	np	np	—	2 088.9
2006									
March Quarter	692.5	405.5	653.1	80.6	221.0	np	np	—	2 086.6
June Quarter	666.8	365.3	679.5	76.1	223.1	np	np	—	2 036.6

— nil or rounded to zero (including null cells)

np not available for publication but included in totals where applicable, unless otherwise indicated

(a) Comprising establishments with 40 or more powered sites and cabins, flats, units and villas.

<i>Period</i>	<i>New South Wales</i>	<i>Victoria</i>	<i>Queensland</i>	<i>South Australia</i>	<i>Western Australia</i>	<i>Tasmania</i>	<i>Northern Territory</i>	<i>Australian Capital Territory</i>	<i>Australia</i>
SITE OCCUPANCY RATE (%)									
2005									
June Quarter	72.9	68.7	81.2	68.9	75.0	np	np	np	74.8
September Quarter	72.3	69.0	83.3	76.7	75.9	np	np	—	75.0
December Quarter	73.5	69.5	80.4	67.3	75.5	np	np	—	74.4
2006									
March Quarter	74.8	77.4	80.3	67.7	74.6	np	np	—	76.6
June Quarter	70.8	68.6	82.2	62.6	74.2	np	np	—	73.6

TAKINGS FROM ACCOMMODATION (\$'000)

2005									
June Quarter	11 263	5 424	11 986	1 291	3 597	np	np	np	34 001
September Quarter	11 649	6 134	12 998	1 497	4 069	np	np	—	36 766
December Quarter	12 793	6 406	12 688	1 349	4 206	np	np	—	37 799
2006									
March Quarter	12 595	6 270	12 021	1 377	4 130	np	np	—	36 819
June Quarter	10 659	5 172	12 582	1 477	4 654	np	np	—	34 989

— nil or rounded to zero (including null cells)

np not available for publication but included in totals where applicable, unless otherwise indicated

(a) Comprising establishments with 40 or more powered sites and cabins, flats, units and villas.

Period	New South Wales	Victoria	Queensland	South Australia	Western Australia	Tasmania	Northern Territory	Australian Capital Territory	Australia
ESTABLISHMENTS (no.)									
2005									
June Quarter	545	414	346	150	209	46	54	4	1 768
September Quarter	539	410	341	147	205	46	53	3	1 744
December Quarter	534	412	338	146	203	46	52	3	1 734
2006									
March Quarter	527	407	336	145	202	46	52	3	1 718
June Quarter	526	403	334	145	202	46	51	3	1 710
ON-SITE VANS (no.)									
2005									
June Quarter	8 005	3 563	4 097	546	1 671	240	139	160	18 421
September Quarter	8 299	3 432	3 969	596	1 708	np	98	np	18 427
December Quarter	8 016	3 475	3 771	611	1 792	np	np	np	18 103
2006									
March Quarter	7 853	3 112	3 844	562	1 705	292	np	np	17 531
June Quarter	8 155	3 171	3 750	565	1 653	np	133	np	17 756
OTHER POWERED SITES (no.)									
2005									
June Quarter	48 523	37 427	24 735	13 122	18 099	2 858	4 586	373	149 723
September Quarter	47 228	36 393	24 596	12 956	17 688	np	4 585	np	146 651
December Quarter	47 633	36 825	24 236	12 795	17 348	np	np	np	146 515
2006									
March Quarter	47 507	37 260	23 990	12 838	17 447	2 809	np	np	146 703
June Quarter	46 552	36 954	24 158	12 719	17 299	np	4 513	np	145 405
UNPOWERED SITES (no.)									
2005									
June Quarter	12 526	9 894	6 260	4 524	3 530	1 621	2 855	400	41 610
September Quarter	12 090	9 975	6 327	4 306	3 554	np	2 960	np	41 230
December Quarter	12 228	9 967	6 192	4 573	3 572	np	np	np	41 310
2006									
March Quarter	12 218	10 201	6 176	4 525	3 838	1 727	np	np	41 788
June Quarter	12 372	10 062	6 229	4 589	4 024	np	2 714	np	42 116
CABINS FLATS, UNITS AND VILLAS (no.)									
2005									
June Quarter	11 889	6 141	5 778	2 560	3 300	645	977	96	31 386
September Quarter	11 916	6 092	5 672	2 499	3 122	np	960	np	31 010
December Quarter	11 911	6 424	5 686	2 472	3 162	np	np	np	31 400
2006									
March Quarter	11 813	6 336	5 790	2 525	3 220	671	np	np	31 468
June Quarter	11 910	6 232	5 901	2 570	3 178	np	1 026	np	31 595

np not available for publication but included in totals where applicable, unless otherwise indicated

(a) Comprising establishments with 40 or more powered sites and cabins, flats, units and villas.

<i>Period</i>	<i>New South Wales</i>	<i>Victoria</i>	<i>Queensland</i>	<i>South Australia</i>	<i>Western Australia</i>	<i>Tasmania</i>	<i>Northern Territory</i>	<i>Australian Capital Territory</i>	<i>Australia</i>
TOTAL CAPACITY (no.)									
2005									
June Quarter	80 943	57 025	40 870	20 752	26 600	5 364	8 557	1 029	241 140
September Quarter	79 533	55 892	40 564	20 357	26 072	np	8 603	np	237 318
December Quarter	79 788	56 691	39 885	20 451	25 874	np	np	np	237 328
2006									
March Quarter	79 391	56 909	39 800	20 450	26 210	5 499	np	np	237 490
June Quarter	78 989	56 419	40 038	20 443	26 154	np	8 386	np	236 872
PERSONS EMPLOYED (no.)									
2005									
June Quarter	3 239	1 924	1 935	807	1 271	242	559	87	10 064
September Quarter	3 181	1 838	1 855	811	1 249	np	520	np	9 793
December Quarter	3 375	1 988	1 806	795	1 227	np	np	np	10 016
2006									
March Quarter	3 308	1 962	1 821	798	1 229	270	np	np	9 956
June Quarter	3 190	1 819	1 842	783	1 288	np	541	np	9 786
SITES OCCUPIED BY LONG-TERM GUESTS (no.)									
2005									
June Quarter	12 477	6 371	11 093	1 920	4 662	364	710	247	37 844
September Quarter	11 997	6 272	11 341	1 802	4 863	np	701	np	37 459
December Quarter	11 999	6 366	10 778	1 756	4 685	np	np	np	36 725
2006									
March Quarter	11 926	6 362	10 925	1 743	4 693	290	np	np	36 750
June Quarter	11 493	6 067	10 922	1 685	4 864	np	676	np	36 150
OTHER SITES PERMANENTLY RESERVED (no.)									
2005									
June Quarter	21 087	15 072	1 352	2 312	2 160	943	1	5	42 932
September Quarter	20 829	15 383	1 291	2 390	2 028	np	22	np	42 918
December Quarter	20 714	15 534	1 269	2 354	1 986	np	np	np	42 903
2006									
March Quarter	20 744	15 148	1 226	2 252	1 882	919	np	np	42 191
June Quarter	20 311	15 106	1 194	2 187	1 979	np	8	np	41 751
SITE NIGHTS OCCUPIED ('000)									
2005									
June Quarter	4 115.9	2 450.2	2 063.2	720.0	1 138.6	172.1	296.7	31.8	10 988.6
September Quarter	4 012.8	2 383.6	2 451.9	658.4	1 262.0	np	402.0	np	11 338.7
December Quarter	4 183.6	2 584.5	1 873.6	737.6	1 103.9	np	np	np	10 878.9
2006									
March Quarter	4 315.5	2 841.6	1 685.6	817.5	1 069.9	246.6	np	np	11 119.5
June Quarter	3 954.4	2 419.3	2 030.8	703.9	1 176.8	np	288.7	np	10 765.8

np not available for publication but included in totals where applicable, unless otherwise indicated

(a) Comprising establishments with 40 or more powered sites and cabins, flats, units and villas.

<i>Period</i>	<i>New South Wales</i>	<i>Victoria</i>	<i>Queensland</i>	<i>South Australia</i>	<i>Western Australia</i>	<i>Tasmania</i>	<i>Northern Territory</i>	<i>Australian Capital Territory</i>	<i>Australia</i>
SITE OCCUPANCY RATE (%)									
2005									
June Quarter	55.9	48.2	55.5	38.1	47.1	35.9	38.1	34.0	50.4
September Quarter	54.9	48.3	65.7	35.3	52.6	np	50.8	np	52.5
December Quarter	57.0	50.4	51.1	39.3	46.6	np	np	np	50.1
2006									
March Quarter	60.4	55.5	47.1	44.4	45.4	50.3	np	np	52.1
June Quarter	55.1	48.0	55.8	37.8	49.4	np	37.8	np	50.2
TAKINGS FROM ACCOMMODATION (\$'000)									
2005									
June Quarter	63 948	30 111	43 260	13 810	23 793	3 355	9 537	701	188 516
September Quarter	64 221	31 149	55 248	12 665	27 746	np	12 286	np	206 315
December Quarter	81 394	38 980	41 839	15 472	25 696	np	np	np	213 168
2006									
March Quarter	89 294	46 328	36 168	18 076	25 758	6 254	np	np	226 027
June Quarter	66 670	31 756	47 708	14 733	28 125	np	9 974	np	203 323

np not available for publication but included in totals where applicable, unless otherwise indicated

(a) Comprising establishments with 40 or more powered sites and cabins, flats, units and villas.

Period	New South Wales	Victoria	Queensland	South Australia	Western Australia	Tasmania	Northern Territory	Australian Capital Territory	Australia
--------	-----------------	----------	------------	-----------------	-------------------	----------	--------------------	------------------------------	-----------

LETTING ENTITIES (a) (no.)

2005									
June Quarter	95	16	44	8	2	1	—	—	166
September Quarter	98	17	44	8	2	1	—	—	170
December Quarter	97	17	43	8	2	1	—	—	168
2006									
March Quarter	98	16	41	8	2	1	—	—	166
June Quarter	97	16	40	8	2	1	—	—	164

SINGLE BEDROOM HOLIDAY FLATS, UNITS AND HOUSES (no.)

2005									
June Quarter	403	46	173	np	np	np	—	—	640
September Quarter	406	32	153	np	np	np	—	—	606
December Quarter	393	37	159	np	np	np	—	—	603
2006									
March Quarter	392	100	158	np	np	np	—	—	664
June Quarter	392	51	145	9	np	np	—	—	601

MULTIPLE BEDROOM HOLIDAY FLATS, UNITS AND HOUSES (no.)

2005									
June Quarter	7 554	1 440	2 924	np	np	np	—	—	12 833
September Quarter	7 559	1 643	3 029	np	np	np	—	—	13 123
December Quarter	7 581	1 790	3 081	np	np	np	—	—	13 354
2006									
March Quarter	7 808	1 761	3 002	np	np	np	—	—	13 490
June Quarter	7 542	1 715	2 992	736	np	np	—	—	13 141

TOTAL HOLIDAY FLATS, UNITS AND HOUSES (no.)

2005									
June Quarter	7 957	1 486	3 097	np	np	np	—	—	13 473
September Quarter	7 965	1 675	3 182	np	np	np	—	—	13 729
December Quarter	7 974	1 827	3 240	np	np	np	—	—	13 957
2006									
March Quarter	8 200	1 861	3 160	np	np	np	—	—	14 154
June Quarter	7 934	1 766	3 137	745	np	np	—	—	13 742

BED SPACES (no.)

2005									
June Quarter	39 703	10 674	14 244	np	np	np	—	—	70 274
September Quarter	42 309	11 864	14 843	np	np	np	—	—	74 671
December Quarter	42 387	12 487	14 955	np	np	np	—	—	75 846
2006									
March Quarter	43 543	11 725	14 985	np	np	np	—	—	76 305
June Quarter	42 353	12 106	14 698	5 263	np	np	—	—	75 441

— nil or rounded to zero (including null cells)

np not available for publication but included in totals where applicable, unless otherwise indicated

(a) The number of owners, managers or real estate agents with 15 or more self-contained units.

<i>Period</i>	<i>New South Wales</i>	<i>Victoria</i>	<i>Queensland</i>	<i>South Australia</i>	<i>Western Australia</i>	<i>Tasmania</i>	<i>Northern Territory</i>	<i>Australian Capital Territory</i>	<i>Australia</i>
UNIT NIGHTS OCCUPIED ('000)									
2005									
June Quarter	183.4	11.7	108.0	np	np	np	—	—	321.7
September Quarter	201.3	10.4	164.3	np	np	np	—	—	392.0
December Quarter	248.7	11.9	159.1	np	np	np	—	—	437.7
2006									
March Quarter	279.2	21.7	159.2	np	np	np	—	—	492.6
June Quarter	177.7	9.3	111.2	np	np	np	—	—	313.1
UNIT OCCUPANCY RATE (%)									
2005									
June Quarter	25.3	8.7	38.3	np	np	np	—	—	26.2
September Quarter	27.5	6.7	56.1	np	np	np	—	—	31.0
December Quarter	33.9	7.1	53.4	np	np	np	—	—	34.1
2006									
March Quarter	37.8	13.0	56.0	np	np	np	—	—	38.7
June Quarter	24.6	5.8	39.0	np	np	np	—	—	25.0
UNIT LETTINGS ('000)									
2005									
June Quarter	28.9	3.8	22.5	np	np	np	—	—	57.8
September Quarter	32.9	2.2	27.8	np	np	np	—	—	66.4
December Quarter	42.1	2.9	36.0	np	np	np	—	—	84.0
2006									
March Quarter	43.5	4.9	28.2	np	np	np	—	—	81.7
June Quarter	31.1	3.4	22.2	np	np	np	—	—	59.5
AVERAGE LENGTH OF STAY (<i>days</i>)									
2005									
June Quarter	6.4	3.1	4.8	np	np	np	—	—	5.6
September Quarter	6.1	4.6	5.9	np	np	np	—	—	5.9
December Quarter	5.9	4.2	4.4	np	np	np	—	—	5.2
2006									
March Quarter	6.4	4.5	5.7	np	np	np	—	—	6.0
June Quarter	5.7	2.7	5.0	np	np	np	—	—	5.3
TAKINGS FROM ACCOMMODATION (\$'000)									
2005									
June Quarter	12 352	1 004	8 524	np	np	np	—	—	23 728
September Quarter	17 168	1 625	13 388	np	np	np	—	—	33 668
December Quarter	26 633	1 340	15 289	np	np	np	—	—	45 320
2006									
March Quarter	31 269	3 166	14 313	np	np	np	—	—	52 386
June Quarter	14 844	998	9 847	np	np	np	—	—	27 187

— nil or rounded to zero (including null cells)

np not available for publication but included in totals where applicable, unless otherwise indicated

Period	New South Wales	Victoria	Queensland	South Australia	Western Australia	Tasmania	Northern Territory	Australian Capital Territory	Australia
--------	-----------------	----------	------------	-----------------	-------------------	----------	--------------------	------------------------------	-----------

LETTING ENTITIES (a) (no.)

2005									
June Quarter	63	17	298	7	19	7	2	3	416
September Quarter	55	17	302	7	19	7	2	3	412
December Quarter	55	17	304	7	20	7	2	3	415
2006									
March Quarter	56	17	306	7	20	7	2	3	418
June Quarter	56	17	303	7	20	7	2	3	415

SINGLE BEDROOM HOLIDAY FLATS, UNITS AND HOUSES (no.)

2005									
June Quarter	450	244	2 751	np	np	np	np	np	3 917
September Quarter	404	254	2 945	np	np	np	np	np	4 159
December Quarter	408	253	2 912	np	np	np	np	np	4 113
2006									
March Quarter	447	250	3 107	np	np	np	np	np	4 383
June Quarter	453	263	2 896	98	np	np	np	59	4 190

MULTIPLE BEDROOM HOLIDAY FLATS, UNITS AND HOUSES (no.)

2005									
June Quarter	1 465	554	7 394	np	np	np	np	np	10 546
September Quarter	1 040	557	7 385	np	np	np	np	np	10 077
December Quarter	1 029	559	7 591	np	np	np	np	np	10 322
2006									
March Quarter	1 047	566	7 457	np	np	np	np	np	10 177
June Quarter	1 035	558	7 588	149	np	np	np	110	10 349

TOTAL HOLIDAY FLATS, UNITS AND HOUSES (no.)

2005									
June Quarter	1 915	798	10 145	np	np	np	np	np	14 463
September Quarter	1 444	811	10 330	np	np	np	np	np	14 236
December Quarter	1 437	812	10 503	np	np	np	np	np	14 435
2006									
March Quarter	1 494	816	10 564	np	np	np	np	np	14 560
June Quarter	1 488	821	10 484	247	np	np	np	169	14 539

BED SPACES (no.)

2005									
June Quarter	9 457	3 374	38 783	np	np	np	np	np	59 605
September Quarter	6 229	3 346	39 870	np	np	np	np	np	57 397
December Quarter	6 148	3 383	40 824	np	np	np	np	np	58 331
2006									
March Quarter	6 477	3 424	40 572	np	np	np	np	np	58 849
June Quarter	6 458	3 423	40 175	953	np	np	np	976	58 745

np not available for publication but included in totals where applicable, unless otherwise indicated

(a) The number of owners, managers or real estate agents with 15 or more self-contained units.

<i>Period</i>	<i>New South Wales</i>	<i>Victoria</i>	<i>Queensland</i>	<i>South Australia</i>	<i>Western Australia</i>	<i>Tasmania</i>	<i>Northern Territory</i>	<i>Australian Capital Territory</i>	<i>Australia</i>
PERSONS EMPLOYED (no.)									
2005									
June Quarter	584	222	1 432	np	np	np	np	np	2 640
September Quarter	541	235	1 413	np	np	np	np	np	2 599
December Quarter	543	230	1 448	np	np	np	np	np	2 650
2006									
March Quarter	454	216	1 308	np	np	np	np	np	2 402
June Quarter	495	228	1 263	55	np	np	np	39	2 395
UNIT NIGHTS OCCUPIED ('000)									
2005									
June Quarter	69.6	40.0	538.6	np	np	np	np	np	735.1
September Quarter	67.8	45.2	707.3	np	np	np	np	np	919.0
December Quarter	75.5	42.0	676.9	np	np	np	np	np	905.4
2006									
March Quarter	86.1	42.0	619.8	np	np	np	np	np	858.2
June Quarter	62.6	38.1	530.9	np	np	np	np	np	728.1
UNIT OCCUPANCY RATE (%)									
2005									
June Quarter	40.2	58.4	58.3	np	np	np	np	np	56.1
September Quarter	52.0	60.5	74.4	np	np	np	np	np	70.3
December Quarter	57.1	62.5	70.1	np	np	np	np	np	68.6
2006									
March Quarter	64.0	61.1	65.2	np	np	np	np	np	65.7
June Quarter	47.1	51.0	55.7	np	np	np	np	np	55.1
UNIT LETTINGS ('000)									
2005									
June Quarter	25.4	9.1	172.9	np	np	np	np	np	231.7
September Quarter	22.0	10.6	205.8	np	np	np	np	np	271.3
December Quarter	27.5	10.9	223.5	np	np	np	np	np	296.4
2006									
March Quarter	29.8	9.7	216.2	np	np	np	np	np	287.0
June Quarter	23.1	10.0	199.8	np	np	np	np	np	259.8
AVERAGE LENGTH OF STAY (days)									
2005									
June Quarter	2.7	4.4	3.1	np	np	np	np	np	3.2
September Quarter	3.1	4.3	3.4	np	np	np	np	np	3.4
December Quarter	2.7	3.8	3.0	np	np	np	np	np	3.1
2006									
March Quarter	2.9	4.3	2.9	np	np	np	np	np	3.0
June Quarter	2.7	3.8	2.7	np	np	np	np	np	2.8
TAKINGS FROM ACCOMMODATION (\$'000)									
2005									
June Quarter	8 109	4 754	54 754	np	np	np	np	np	75 884
September Quarter	9 368	6 115	77 796	np	np	np	np	np	102 317
December Quarter	10 179	5 396	79 248	np	np	np	np	np	105 436
2006									
March Quarter	12 227	5 562	74 633	np	np	np	np	np	103 799
June Quarter	7 646	4 741	58 738	np	np	np	np	np	81 009

np not available for publication but included in totals where applicable, unless otherwise indicated

Period	New South Wales	Victoria	Queensland	South Australia	Western Australia	Tasmania	Northern Territory	Australian Capital Territory	Australia
--------	-----------------	----------	------------	-----------------	-------------------	----------	--------------------	------------------------------	-----------

LETTING ENTITIES (a) (no.)

2005									
June Quarter	158	33	342	15	21	8	2	3	582
September Quarter	153	34	346	15	21	8	2	3	582
December Quarter	152	34	347	15	22	8	2	3	583
2006									
March Quarter	154	33	347	15	22	8	2	3	584
June Quarter	153	33	343	15	22	8	2	3	579

SINGLE BEDROOM HOLIDAY FLATS, UNITS AND HOUSES (no.)

2005									
June Quarter	853	290	2 924	109	254	38	np	np	4 557
September Quarter	810	286	3 098	112	322	48	np	np	4 765
December Quarter	801	290	3 071	106	313	46	np	np	4 716
2006									
March Quarter	839	350	3 265	106	308	46	np	np	5 047
June Quarter	845	314	3 041	107	345	50	np	59	4 791

MULTIPLE BEDROOM HOLIDAY FLATS, UNITS AND HOUSES (no.)

2005									
June Quarter	9 019	1 994	10 318	897	842	145	np	np	23 379
September Quarter	8 599	2 200	10 414	865	817	141	np	np	23 200
December Quarter	8 610	2 349	10 672	891	846	144	np	np	23 676
2006									
March Quarter	8 855	2 327	10 459	910	852	144	np	np	23 667
June Quarter	8 577	2 273	10 580	885	870	141	np	110	23 490

TOTAL HOLIDAY FLATS, UNITS AND HOUSES (no.)

2005									
June Quarter	9 872	2 284	13 242	1 006	1 096	183	np	np	27 936
September Quarter	9 409	2 486	13 512	977	1 139	189	np	np	27 965
December Quarter	9 411	2 639	13 743	997	1 159	190	np	np	28 392
2006									
March Quarter	9 694	2 677	13 724	1 016	1 160	190	np	np	28 714
June Quarter	9 422	2 587	13 621	992	1 215	191	np	169	28 281

BED SPACES (no.)

2005									
June Quarter	49 160	14 048	53 027	5 591	6 184	829	np	np	129 879
September Quarter	48 538	15 210	54 713	5 581	6 164	823	np	np	132 068
December Quarter	48 535	15 870	55 779	5 935	6 125	894	np	np	134 177
2006									
March Quarter	50 020	15 149	55 557	5 973	6 230	894	np	np	135 154
June Quarter	48 811	15 529	54 873	6 216	6 522	904	np	976	134 186

UNIT NIGHTS OCCUPIED ('000)

2005									
June Quarter	253.0	51.8	646.7	26.9	51.6	7.7	np	np	1 056.8
September Quarter	269.1	55.6	871.6	23.1	63.6	7.7	np	np	1 310.9
December Quarter	324.2	53.9	836.0	27.5	74.4	10.0	np	np	1 343.1
2006									
March Quarter	365.3	63.7	779.0	42.3	69.4	12.9	np	np	1 350.8
June Quarter	240.4	47.5	642.2	22.6	62.8	7.2	np	np	1 041.2

np not available for publication but included in totals where applicable, unless otherwise indicated

(a) The number of owners, managers or real estate agents with 15 or more self-contained units.

<i>Period</i>	<i>New South Wales</i>	<i>Victoria</i>	<i>Queensland</i>	<i>South Australia</i>	<i>Western Australia</i>	<i>Tasmania</i>	<i>Northern Territory</i>	<i>Australian Capital Territory</i>	<i>Australia</i>
UNIT OCCUPANCY RATE (%)									
2005									
June Quarter	28.2	25.4	53.7	29.4	51.7	46.5	np	np	41.7
September Quarter	31.2	24.3	70.1	25.7	60.7	44.3	np	np	51.0
December Quarter	37.4	22.9	66.2	30.0	69.7	57.1	np	np	51.6
2006									
March Quarter	41.9	27.0	63.1	46.2	66.5	75.7	np	np	52.4
June Quarter	28.1	20.2	51.8	25.0	56.8	41.2	np	np	40.5
UNIT LETTINGS ('000)									
2005									
June Quarter	54.3	12.9	195.4	7.3	11.3	3.5	np	np	289.6
September Quarter	54.9	12.8	233.6	6.9	20.4	3.9	np	np	337.7
December Quarter	69.5	13.8	259.5	6.0	22.1	5.3	np	np	380.4
2006									
March Quarter	73.3	14.6	244.3	7.9	18.6	6.2	np	np	368.7
June Quarter	54.2	13.4	222.0	6.0	16.0	2.7	np	np	319.3
AVERAGE LENGTH OF STAY (days)									
2005									
June Quarter	4.7	4.0	3.3	3.7	4.6	2.2	np	np	3.6
September Quarter	4.9	4.3	3.7	3.3	3.1	2.0	np	np	3.9
December Quarter	4.7	3.9	3.2	4.6	3.4	1.9	np	np	3.5
2006									
March Quarter	5.0	4.4	3.2	5.4	3.7	2.1	np	np	3.7
June Quarter	4.4	3.5	2.9	3.8	3.9	2.6	np	np	3.3
TAKINGS FROM ACCOMMODATION (\$'000)									
2005									
June Quarter	20 461	5 757	63 278	2 654	4 683	646	np	np	99 612
September Quarter	26 536	7 741	91 184	2 190	5 265	645	np	np	135 985
December Quarter	36 811	6 736	94 538	2 915	7 106	889	np	np	150 755
2006									
March Quarter	43 495	8 728	88 946	4 769	7 016	1 315	np	np	156 184
June Quarter	22 490	5 739	68 585	2 313	6 299	651	np	np	108 196

np not available for publication but included in totals where applicable, unless otherwise indicated

<i>Period</i>	<i>New South Wales</i>	<i>Victoria</i>	<i>Queensland</i>	<i>South Australia</i>	<i>Western Australia</i>	<i>Tasmania</i>	<i>Northern Territory</i>	<i>Australian Capital Territory</i>	<i>Australia</i>
ESTABLISHMENTS (no.)									
2005									
June Quarter	103	67	132	29	70	24	26	5	456
September Quarter	104	67	131	27	67	24	27	5	452
December Quarter	105	70	130	29	67	24	26	5	456
2006									
March Quarter	107	70	127	27	65	24	26	5	451
June Quarter	105	69	123	27	65	22	26	5	442
BED SPACES (no.)									
2005									
June Quarter	11 245	8 259	14 460	2 573	5 118	1 849	3 201	798	47 503
September Quarter	11 297	8 369	14 671	2 354	5 161	1 919	3 650	805	48 226
December Quarter	11 436	8 486	14 666	2 420	5 184	1 816	3 565	759	48 332
2006									
March Quarter	11 669	8 923	13 718	2 337	4 984	1 888	3 571	952	48 042
June Quarter	11 806	8 791	13 580	2 386	5 003	1 626	3 587	953	47 732
PERSONS EMPLOYED (no.)									
2005									
June Quarter	679	448	1 247	118	323	156	346	103	3 420
September Quarter	674	442	1 302	103	321	149	319	94	3 404
December Quarter	721	463	1 231	107	304	161	252	98	3 337
2006									
March Quarter	716	487	1 145	113	322	156	260	82	3 281
June Quarter	714	523	1 193	124	289	133	222	79	3 277
GUEST NIGHTS OCCUPIED (no.)									
2005									
June Quarter	502 848	255 873	713 766	72 336	210 680	29 839	128 428	25 592	1 939 362
September Quarter	512 151	234 277	749 202	66 323	193 813	19 672	193 296	41 361	2 010 095
December Quarter	615 328	327 039	696 058	85 871	208 494	37 572	112 451	27 400	2 110 213
2006									
March Quarter	670 795	414 230	699 028	88 683	253 170	64 593	97 204	36 974	2 324 677
June Quarter	498 803	266 966	665 277	66 114	224 322	27 088	139 612	39 335	1 927 517
BED OCCUPANCY RATE (%)									
2005									
June Quarter	49.6	34.4	54.6	30.9	45.2	17.9	44.1	35.2	45.2
September Quarter	49.3	30.8	55.8	30.6	40.8	11.4	57.6	55.8	45.5
December Quarter	58.5	42.5	51.6	38.6	43.7	22.5	34.3	39.2	47.6
2006									
March Quarter	64.2	52.6	56.6	42.2	56.4	38.0	30.7	43.2	54.1
June Quarter	46.6	34.0	53.9	30.4	49.4	18.3	42.8	45.4	44.6
GUEST ARRIVALS (no.)									
2005									
June Quarter	195 397	78 962	306 061	24 828	79 755	14 654	69 234	11 885	780 776
September Quarter	193 785	70 814	309 562	24 297	62 200	9 267	81 805	18 810	770 540
December Quarter	228 104	98 806	300 366	29 433	76 148	20 563	53 028	15 593	822 041
2006									
March Quarter	235 359	129 114	268 987	29 779	82 486	30 759	41 839	25 149	843 472
June Quarter	158 421	78 558	272 351	24 645	64 774	15 492	68 434	18 938	701 613

(a) Comprising establishments with 25 or more bed spaces.

<i>Period</i>	<i>New South Wales</i>	<i>Victoria</i>	<i>Queensland</i>	<i>South Australia</i>	<i>Western Australia</i>	<i>Tasmania</i>	<i>Northern Territory</i>	<i>Australian Capital Territory</i>	<i>Australia</i>
AVERAGE LENGTH OF STAY (days)									
2005									
June Quarter	2.6	3.2	2.3	2.9	2.6	2.0	1.9	2.2	2.5
September Quarter	2.6	3.3	2.4	2.7	3.1	2.1	2.4	2.2	2.6
December Quarter	2.7	3.3	2.3	2.9	2.7	1.8	2.1	1.8	2.6
2006									
March Quarter	2.9	3.2	2.6	3.0	3.1	2.1	2.3	1.5	2.8
June Quarter	3.1	3.4	2.4	2.7	3.5	1.7	2.0	2.1	2.7
TAKINGS FROM ACCOMMODATION (\$'000)									
2005									
June Quarter	12 633	6 527	14 424	1 380	4 220	562	2 794	644	43 184
September Quarter	13 087	6 124	16 075	1 192	3 898	384	4 555	1 013	46 328
December Quarter	16 707	8 150	15 035	1 634	4 337	772	2 529	730	49 893
2006									
March Quarter	17 761	10 423	13 661	1 813	5 403	1 205	2 076	994	53 337
June Quarter	12 954	6 907	14 272	1 314	4 748	506	3 351	1 084	45 136

(a) Comprising establishments with 25 or more bed spaces.

EXPLANATORY NOTES

- INTRODUCTION**
- 1** This publication presents data from the quarterly Survey of Tourist Accommodation (STA). The STA is a mailout collection that completely enumerates all in-scope accommodation establishments within Australia.
- SCOPE**
- 2** From March quarter 2005, the scope of the STA comprises the following categories of establishments:
- licensed hotels and resorts with facilities and 5 or more rooms
 - motels, private hotels and guest houses with facilities and 5 or more rooms
 - serviced apartments with 5 or more units
 - caravan parks with 40 or more powered sites
 - holiday flats, units and houses of letting entities with 15 or more rooms or units
 - visitor hostels with 25 or more bed spaces.
- 3** With the exception of caravan parks, these establishments provide predominantly short-term non-residential accommodation, i.e. accommodation which is not leased, and which is provided to guests who would generally stay for periods of less than two months. Some of these establishments also provide long-term residential accommodation. The amount of such activity is considered to be insignificant and is included in the data presented in this publication.
- 4** Caravan parks provide either short-term or long-term accommodation. If a caravan park has the majority of sites occupied by paying guests who have stayed continuously for two months or more during the survey period, the caravan park is classified as long-term. Data for caravan parks are presented by short-term and long-term in this publication.
- 5** Previous to March quarter 2005, the scope of the STA comprised:
- licensed hotels and resorts with facilities and 15 or more rooms
 - motels, private hotels and guest houses with facilities and 15 or more rooms
 - serviced apartments with 15 or more units.
- 6** For the four quarters of 2000 and 2003, the scope of the STA was expanded to include:
- caravan parks with 40 or more powered sites
 - holiday flats, units and houses of letting entities with 15 or more rooms or units
 - visitor hostels with 25 or more bed spaces.
- COVERAGE**
- 7** The main source of coverage is from the Australian Automobile Association through AAA Tourism Pty Ltd. This is supplemented by notification of new tourism developments and their likely opening dates in selected guides, major tourism journals and periodicals and newspapers. Periodic comparison with lists of accommodation establishments provided by the various tourism organisations and industry associations is also undertaken.
- TAKINGS FROM ACCOMMODATION**
- 8** From 1 July 2000, takings from accommodation include gross revenue from the provision of accommodation, including GST. Takings from meals are excluded. Where businesses are unable to provide the data inclusive of GST, it is automatically adjusted by the ABS prior to aggregation and release in output.
- STAR GRADING**
- 9** Star grade classifications of establishments are continuously revised by AAA Tourism Pty Ltd. This should be taken into account when making comparisons over time. Any queries regarding the star grading process should be directed to AAA Tourism Pty Ltd on (03) 8601 2200 or email enquiries@aaatourism.com.au.
- 10** Data by star grade for states and territories are no longer presented in this publication. These data are included in the data cubes that accompany this publication: *Tourist Accommodation, Small Area Data* (cat. no. 8635.0.55.002 for national data and cat. no. 8635.1.55.001 – 8635.8.55.001 for state/territory data).

EXPLANATORY NOTES *continued*

STATISTICAL GEOGRAPHY

11 Small area statistics for 2006 are classified to the Australian Standard Geographical Classification (ASGC), 2005 Edition (cat. no. 1216.0). Data are coded to the statistical local area (SLA) level.

12 These SLA data are aggregated to tourism regions as defined by relevant state and territory tourism organisations. Tourism regions are reviewed annually and are subject to boundary and name changes. Where changes have occurred care should be taken when making comparisons with previously published data at this level.

13 Data by tourism regions are no longer presented in this publication. Small area data are provided in the data cubes that accompany this publication: *Tourist Accommodation, Small Area Data* (cat. no. 8635.0.55.002 for national data and cat. no. 8635.1.55.001 – 8635.8.55.001 for state/territory data).

14 Details of SLAs, the composition of tourism regions and maps of tourism regions are provided in the ABS publication *Tourism Region Maps and Concordance Files, Australia* (cat. no. 9503.0.55.001) available from the ABS web site <www.abs.gov.au>.

DATA QUALITY

15 The survey does not have a sample component and the data are not subject to sampling variability. However, other inaccuracies collectively referred to as non-sampling error may affect the data. These non-sampling errors may arise from a number of sources, including:

- errors in the reporting of data by providers
- errors in the process of capturing data
- imputation for missing data
- definition and classification errors
- incomplete coverage.

16 Every effort has been made to reduce non-sampling error to a minimum by careful design and testing of questionnaires, and efficient operating procedures and systems used to compile statistics.

Response rates

17 The June quarter 2006 response rates were:

RESPONSE RATES

<i>Activity</i>	<i>June Qtr 2006</i>
	<i>%</i>
Licensed hotels with facilities	
with 5 to 14 rooms	85.8
with 15 or more rooms	90.9
with 5 or more rooms	89.1
Motels and guest houses	
with 5 to 14 rooms	90.3
with 15 or more rooms	91.5
with 5 or more rooms	91.1
Serviced apartments	
with 5 to 14 rooms	91.6
with 15 or more rooms	94.2
with 5 or more rooms	93.5
Hotels, motels and serviced apartments	
with 5 to 14 rooms	89.5
with 15 or more rooms	91.9
with 5 or more rooms	91.2
Caravan parks	92.2
Holiday flats, units and houses	94.1
Visitor hostels	90.5

EXPLANATORY NOTES *continued*

Imputation rates

18 Missing data items are replaced by imputed values based on reported data. Average quarterly movements are applied to previously reported data for each non-responding unit to estimate values for missing data items. Only if previously reported data are not available, then data from a similar unit is used as a 'donor' for the missing data items. (Note that donor imputation was often used for non-responding units for hotels, motels and serviced apartments with 5 to 14 rooms as previous data was usually unavailable.)

19 The June quarter 2006 imputation rates were:

IMPUTATION RATES

Activity	Nights Occupied (a)	Takings from accommodation
	%	%
Licensed hotels with facilities		
with 5 to 14 rooms	13.4	14.5
with 15 or more rooms	2.9	2.2
with 5 or more rooms	3.2	2.4
Motels and guest houses		
with 5 to 14 rooms	7.9	7.6
with 15 or more rooms	7.8	7.8
with 5 or more rooms	7.8	7.8
Serviced apartments		
with 5 to 14 rooms	9.3	8.8
with 15 or more rooms	5.3	4.5
with 5 or more rooms	5.5	4.7
Hotels, motels and serviced apartments		
with 5 to 14 rooms	9.2	8.9
with 15 or more rooms	5.2	4.4
with 5 or more rooms	5.5	4.5
Caravan parks	7.3	7.0
Holiday flats, units and houses	5.6	5.5
Visitor hostels	8.7	7.7

(a) Based on room nights for hotels, motels and serviced apartments; site nights for caravan parks; unit nights for holiday flats, units and houses; and guest nights for visitor hostels.

BREAK IN TIME SERIES

20 In June quarter 2003, the ABS identified 132 licensed hotels with facilities, motels and guest houses and serviced apartments with 15 or more rooms which had been operating for a number of quarters but were not on the STA frame. These additional establishments were included in the STA from June quarter 2003.

21 The ABS also identified 74 caravan parks which were operating in the March quarter 2003 but were not on the STA frame. These caravan parks were included in the June, September and December quarter 2003 data, but not in the March quarter 2003 data.

22 The addition of these establishments resulted in a break in time series between March and June quarters 2003. The impact of the break in time series for hotels, motels and serviced apartments is explained in Appendix 1, *Tourist Accommodation, Australia, December quarter 2003* (cat. no. 8635.0). The impact of the break in series for caravan parks is explained in the Appendix of *Tourist Accommodation, Australia, Expanded Scope Collection, Year ended 31 December quarter 2003* (cat. no. 8635.0.55.001). Particular care needs to be taken for all calculations of percentage changes that cross the break in series.

EXPLANATORY NOTES *continued*

SEASONAL ADJUSTMENT

23 Seasonal adjustment is a means of removing the estimated effects of normal seasonal variation from the original time series so that the effect of other influences on the series may be more clearly recognised. Seasonal adjustment procedures do not aim to remove the irregular or non-seasonal influences which may be present in any particular quarter. Irregular influences that are highly volatile can make it difficult to interpret the movement of the series even after adjustment for seasonal variation, and cannot be assumed to indicate changes in the trend.

24 The way in which seasonally adjusted and trend estimates were calculated changed from a Forward Factor methodology to a Concurrent methodology in March quarter 2003. The Forward Factor method relied on an annual analysis of the original time series to estimate seasonal factors that were to be applied in the forthcoming four quarters. Under this method the projected seasonal factors, or forward factors, were not updated until the next annual analysis. The Concurrent methodology uses the most up to date original time series available at each reference period to estimate seasonal factors thus eliminating the need to use projected seasonal factors.

TREND ESTIMATES

25 Smoothing the seasonally adjusted series reduces the impact of the irregular component of the seasonally adjusted series and creates the trend estimates. The trend estimates are derived by applying a 7-term Henderson moving average to the quarterly seasonally adjusted series. The Henderson moving average used in the middle of the time series is symmetric but, as the end of a time series is approached, asymmetric forms of the symmetric moving average are applied. Unlike the weights of the standard 7-term Henderson moving average, the weights used with the quarterly data have been tailored to suit the particular characteristics of individual series.

26 While these techniques enable trend estimates for the latest period to be produced, the process does result in revisions to the trend estimates in recent quarters, particularly as additional original estimates become available. For further information refer to *Information Paper: A Guide to Interpreting Time Series - Monitoring Trends, 2003* (cat. no. 1349.0) available at the ABS web site <www.abs.gov.au>.

CONFIDENTIALISATION OF DATA

27 Under the Census and Statistics Act, when releasing statistics the ABS is required to do this in a manner that is "not likely" (in a legal sense) to enable the identification of a particular person or organisation. A number of techniques are used to do this, including suppression of information. To ensure provider confidentiality in the Survey of Tourist Accommodation, the ABS uses a computerised process known as Disclosure Avoidance Analysis System (DAAS) to confidentialise the entire tourist accommodation dataset each quarter. This process not only ensures that data are suppressed to ensure individual establishments cannot be identified, but also suppresses data in other (consequential) cells to ensure data cannot be derived through deduction from the information available.

28 While the scope and coverage of the Survey of Tourist Accommodation has been expanded, priority has been given to maintaining the integrity and continuity of the core collection (hotels, motels and guest houses, and serviced apartments with 15 or more rooms). In order to maximise data released from the core collection series and the new components of the expanded scope collection (hotels, motels and guest houses, and serviced apartments with 5-14 rooms), the 'total' series (5 or more rooms) has been used for any consequential confidentiality required where possible.

29 The DAAS process begins by confidentialising at the Statistical Local Area (SLA) level, then across Tourism regions, then at the state level and finally the national level. If there is an SLA that has been made confidential then another SLA will have to be made confidential within that Tourism region to protect the confidentiality of the providers in the SLA that was originally made confidential. Depending on the number of SLAs in the Tourism region the whole Tourism region may need to be made confidential. As a

EXPLANATORY NOTES *continued*

CONFIDENTIALISATION OF DATA *continued*

consequence of this, then at least one more Tourism region within a state or territory will also be confidentialised. This may also occur at the state/territory level.

USER AGGREGATION OF DATA

30 The results of any user-aggregated data across time periods should be viewed with caution, due to the possibility of non-inclusion of confidentialised data (see the above section for more information re confidentialisation). Where one or more cells contributing to a total have been confidentialised (ie, contains the value of n.p.), the resulting aggregated total will be incorrect. However, some broader levels of data may not be affected by confidentialised cells.

31 Where data can be aggregated (ie, no confidentialised cells are included) for calendar and financial year/s purposes, Establishments, Rooms, Persons employed and Bed spaces data items should not be aggregated. For these items it is recommended that for calendar years, the value of the December quarter is used, and for financial years, the value of the June quarter is used.

32 Any data items that have been derived from other items collected in the survey cannot be aggregated (ie, all those with labels ending in 'rate' or commencing with 'average'). These items must be re-derived based on the aggregation of each of the quarterly items collected in the survey used to derive the rate or average (see Glossary for formulas).

33 Users are cautioned against deriving any non-standard aggregations (eg, aggregation of selected star gradings such as 4-star and 5-star; aggregation of selected geographical areas such as capital city areas and balance of state; aggregation of selected activities such as hotels and motels combined). This is because data are confidentialised based on the standard data item structure.

EFFECTS OF ROUNDING

34 Where figures have been rounded, discrepancies may occur between totals and the sum of the component items.

RELATED PUBLICATIONS

35 Other ABS publications and products which may be of interest are outlined below. Please note, older publications may no longer be available through ABS bookshops but are available through ABS libraries. All publications released from 1998 onwards are available on the ABS web site <www.abs.gov.au>.

Tourist Accommodation, Small Area Data (cat. no. 8635.0.55.002) (data cube for Australia – issued quarterly)

Tourist Accommodation, Small Area Data (cat. no. 8635.1.55.001–8635.8.55.001) (data cubes for each state/territory – issued quarterly)

Tourism Region Maps and Concordance Files, Australia (cat. no. 9503.0.55.001) (annual)

Tourist Accommodation, Australia, Expanded Scope Collection (cat. no. 8635.0.55.001) (irregular)

Short-term Visitor Arrivals Estimates, Australia (cat. no. 3401.0.55.001) (issued monthly)

Overseas Arrivals and Departures, Australia (cat. no. 3401.0) (issued monthly)

Australian National Accounts, Tourism Satellite Account (cat. no. 5249.0) (annual)

Directory of Tourism Statistics, 2001 (cat. no. 1130.0) (irregular)

36 Current publications and other products released by the ABS are listed in the *Catalogue of Publications and Products* (cat. no. 1101.0). The catalogue is available from any ABS office or the ABS web site <www.abs.gov.au>. The ABS also issues a daily Release Advice on the web site which details products to be released in the week ahead.

ABS DATA AVAILABLE ON REQUEST

37 As well as the statistics included in this publication, the ABS has other relevant data available on request. Inquiries should be made to the National Information and Referral Service on 1300 135 070.

GLOSSARY

Average length of stay	<p>Average number of days each guest stayed during the reference period. It is a derived item calculated by dividing the number of guest nights occupied by the number of guest arrivals with the result expressed as a number of days,</p> $\text{Average length of stay(days)} = \frac{\text{Guest nights occupied}}{\text{Guest arrivals}}$
Average takings per available room night	<p>The takings from accommodation divided by the total number of room nights available for the survey period,</p> $\text{Average takings per available room night(\$)} = \frac{\text{Takings from accommodation}}{\text{Room nights available}}$
Average takings per room night occupied	<p>The takings from accommodation divided by the total number of room nights occupied for the survey period,</p> $\text{Average takings per room night occupied(\$)} = \frac{\text{Takings from accommodation}}{\text{Room nights occupied}}$
Bed occupancy rate	<p>The bed occupancy rate represents bed occupancy expressed as a percentage of total capacity available during the survey period,</p> $\text{Bed occupancy rate (\%)} = \frac{\text{Guest nights occupied}}{\text{Guest nights available}} * 100$
Bed spaces	<p>The maximum number of bed spaces normally in place available to accommodate paying guests during the survey period. Three-quarter beds are counted as one bed space; double beds as two bed spaces. Cots and divans not normally used as beds are excluded.</p>
Cabins, flats, units and villas	<p>The maximum number of cabins, flats, units and villas available at caravan parks for accommodating paying guests during the survey period.</p>
Capacity	<p>Capacity in terms of rooms/units/apartments/suites, visitor hostel bed spaces, holiday flats/units/houses or caravan park sites is the maximum number available to accommodate paying guests on the last day of the survey period. Capacity closed temporarily for seasonal reasons is included.</p>
Caravan park sites	<p>The measure of total caravan park capacity available for accommodating paying guests during the survey period. Includes on-site vans, other powered sites, unpowered sites and cabins, flats, units and villas.</p>
Caravan parks	<p>Establishments with 40 or more powered sites and cabins, flats, units and villas which provide either short-term or long-term accommodation to the general public and which provide powered sites for caravans and toilet, shower and laundry facilities for guests.</p>
Caravan parks, long-term	<p>Caravan parks where the majority of paying guests occupied sites for periods of two months or more.</p>
Caravan parks, short-term	<p>Caravan parks where the majority of paying guests occupied sites for periods of less than two months.</p>
Establishments	<p>The number of licensed hotels and resorts, motels and guest houses, serviced apartments, caravan parks and visitor hostels within the scope of the survey which operated for any part of the survey period, or which closed temporarily for the quarter for seasonal reasons.</p>
Guest arrivals	<p>The total number of paying guests counted only on the first night they stayed at the accommodation establishment during the survey period.</p> <p>For holiday flats, units and houses this is the same as unit lettings.</p> <p>This data item is not collected for caravan parks.</p>
Guest nights available	<p>The total number of nights available to all paying guests during the survey period.</p> <p>This is derived from the number of bed spaces multiplied by the number of days for which they were available during the survey period. For establishments closing (other than for seasonal reasons) or opening during this period, operating periods only are included.</p>

GLOSSARY *continued*

Guest nights occupied	The total number of paying guests counted on each night they stayed at the accommodation establishment during the survey period.
Holiday flats, units and houses	The total number of holiday flats, units and houses (excluding establishments predominantly operated on a time-share basis) operated by letting entities (i.e. owners, managers or real estate agents) who have sole letting rights to at least 15 flats, units or houses for short-term letting. These flats, units or houses should be mainly self-contained in terms of cooking, bath (or shower) and toilet facilities and should not have breakfast available for guests. Data for holiday flats, units or houses include short-term owner operators as well as paying guest accommodation.
Hotels	See licensed hotels and resorts with facilities.
Letting entities	For holiday flats, units and houses, the number of owners, managers or real estate agents within the scope of the survey who operated for any part of the survey period.
Licensed hotels and resorts with facilities	Establishments with five or more rooms which are licensed to operate a public bar and which provide accommodation on a room/suite basis, with a bath/shower and toilet in most guest rooms, but which do not have full cooking facilities (i.e. hot plates and oven/microwave) in most guest rooms.
Motels, private hotels and guest houses with facilities	Establishments with five or more rooms which are not licensed to operate a public bar, and which provide accommodation on a room/suite basis, with a bath/shower and toilet in most guest rooms, but which do not have full cooking facilities (i.e. hot plates and oven/microwave) in most guest rooms.
Multiple bedroom holiday flats, units and houses	The total number of holiday flats, units and houses available with multiple bedrooms.
Occupancy	Occupancy in terms of room nights, unit nights or site nights occupied refers to the total number of nights each room, unit or caravan park was occupied during the survey period. Occupancy in terms of guest nights refers to the total number of paying guests counted on each night they stayed at the accommodation establishment during the survey period.
On-site vans	The maximum number of vans owned or leased by the establishment for the purpose of providing accommodation to the general public.
Other powered sites	The maximum number of sites with provision for connection to electric power supply, available at caravan parks for accommodating paying guests during the survey period, excluding powered sites occupied by on-site vans, and cabins, flats, units and villas.
Other sites permanently reserved	The total number of powered and unpowered sites, on-site vans and cabins, flats, units and villas continuously let for two months or more on the last day of the survey period to tenants who occupy the sites only on a casual or sporadic basis.
Persons employed	The total number of persons working at each accommodation establishment at the end of the survey period (including working proprietors and those working on other than accommodation activities). This data item is not applicable to holiday flats, units and houses let by real estate agents.
Room nights available	The number of rooms/units available multiplied by the number of days for which they were available during the survey period. For establishments closing (other than for seasonal reasons) or opening during this period, operating periods only are included.
Room nights occupied	The number of nights each guest room/unit was occupied by a paying guest during the survey period.
Room occupancy rate	The room occupancy rate represents room occupancy expressed as a percentage of total capacity available during the survey period, $\text{Room occupancy rate (\%)} = \frac{\text{Room nights occupied}}{\text{Room nights available}} * 100$

GLOSSARY *continued*

Room occupancy rate <i>continued</i>	providing that, for establishments closing (other than for seasonal reasons) or opening during the survey period, the denominator of the above expression includes only operating periods.
Rooms	The maximum number of rooms available for accommodating short-term paying guests at each licensed hotel and resort, motel and guest house and serviced apartment during the survey period. Units, apartments and suites are treated as rooms for these types of establishments in these survey results.
Serviced apartments	Establishments with five or more units which mostly comprise self-contained units at the same location, and which are available on a unit/apartment basis to the general public for a minimum of one night. The units should have full cooking facilities (i.e. hot plates and oven/microwave), refrigerator and bath/shower and toilet facilities; all bed linen and towels should be provided, and daily servicing (i.e. cleaning and bed making) must be available through the on-site management, although this service may not necessarily be used.
Single bedroom holiday flats, units and houses	The total number of holiday flats, units and houses available with a single bedroom.
Site nights available	The number of caravan park sites available multiplied by the number of days for which they were available during the survey period. For establishments closing (other than for seasonal reasons) or opening during this period, operating periods only are included.
Site nights occupied	The total number of nights each caravan park site was occupied during the survey period.
Site occupancy rate	<p>The site occupancy rate for caravan parks represents site occupancy expressed as a percentage of total capacity available during the survey period,</p> $\text{Site occupancy rate (\%)} = \frac{\text{Site nights occupied}}{\text{Site nights available}} * 100$ <p>providing that, for establishments closing (other than for seasonal reasons) or opening during the survey period, the denominator of the above expression includes only operating periods.</p>
Sites occupied by long-term guests	The total number of caravan park sites occupied on the last day at the end of the survey period by guests who have stayed continuously for two months or more.
Star grading	<p>The grading of hotels, motels and guest houses with facilities and serviced apartments is based on the classification system owned by AAA Tourism Pty Ltd. The gradings are allocated according to a points system based on the amenities and facilities available to guests. Details of the grading scheme are contained in the publication <i>Accommodation Guide</i> published by AAA Tourism Pty Ltd for each of the individual Australian Motoring Organisations. For the purpose of classifying establishments to a star grading in this publication, 'half' star gradings are ignored (e.g. a two and a half star grading has been shown as two star).</p> <p>While coverage has significantly improved, some establishments (including some competing in the four and five star markets and having significant takings) still remain outside the star grading scheme. These establishments have been given a star grading of 'ungraded'.</p>
Takings from accommodation	<p>Since 1 July 2000, takings from accommodation include gross revenue from the provision of accommodation, including GST. Takings from meals are excluded. In cases where takings from accommodation data cannot be provided inclusive of GST the amount of GST payable is estimated and the data revised accordingly.</p> <p>Takings from accommodation for each month generally represent the takings received during that month. Where payments are received in advance of, or after the provision of accommodation to guests, the monthly figure for takings from accommodation may not necessarily bear a direct relationship to the number of guests accommodated during the month.</p>

GLOSSARY *continued*

Unit lettings	The total number of times a holiday flat, unit or house was occupied by a new tenant, counted only on the first night it was occupied by the new tenant. This is the equivalent of guest arrivals.
Unit nights available	The number of holiday flats, units and houses available multiplied by the number of days for which they were available during the survey period. For establishments closing (other than for seasonal reasons) or opening during this period, operating periods only are included.
Unit nights occupied	The total number of nights each holiday flat, unit or house was occupied during the survey period.
Unit occupancy rate	<p>The unit occupancy rate for holiday flats, units and houses represents unit occupancy expressed as a percentage of total capacity available during the survey period,</p> $\text{Unit occupancy rate (\%)} = \frac{\text{Unit nights occupied}}{\text{Unit nights available}} * 100$ <p>providing that, for letting entities closing (other than for seasonal reasons) or opening during the survey period, the denominator of the above expression includes only operating periods.</p>
Unpowered sites	The maximum number of sites with no provision for connection to electric power supply, available at caravan parks for accommodating paying guests during the survey period.
Visitor hostels	Establishments with 25 or more bed spaces which provide accommodation to visitors on a bed basis (rather than by room). This category does not include establishments providing charity type accommodation (e.g. Salvation Army hostels) nor hotels, motels and guest houses without in-room facilities which provide accommodation on a per room basis.

FOR MORE INFORMATION . . .

INTERNET **www.abs.gov.au** the ABS web site is the best place for data from our publications and information about the ABS.

LIBRARY A range of ABS publications are available from public and tertiary libraries Australia wide. Contact your nearest library to determine whether it has the ABS statistics you require, or visit our web site for a list of libraries.

INFORMATION AND REFERRAL SERVICE

Our consultants can help you access the full range of information published by the ABS that is available free of charge from our web site, or purchase a hard copy publication. Information tailored to your needs can also be requested as a 'user pays' service. Specialists are on hand to help you with analytical or methodological advice.

PHONE 1300 135 070

EMAIL client.services@abs.gov.au

FAX 1300 135 211

POST Client Services, ABS, GPO Box 796, Sydney NSW 2001

FREE ACCESS TO STATISTICS

All ABS statistics can be downloaded free of charge from the ABS web site.

WEB ADDRESS www.abs.gov.au



2863500006068

ISSN 1031 0770

RRP \$30.00